

SONITE
HUSK MOSAIC





OUR VISION

When Sonite was born, our initial quest was to find a solution for lighter decorative surfaces, in a way that we could impact the overall effect that construction has in its surroundings.

Some saw our motivation futile. Yes, we meant that the weight of any alternative would mean a four-fold increase but, let's face it, the percentage of a decorative surface in normal developments were kept to a minimum.

However, we didn't want to succumb to despair. Big enterprises are always a combination of a large numbers of tiny efforts, and we were not going to give in on our side.

Our aesthetic progress didn't stop; we had learnt from the materials that we were producing that the randomness of every piece and its intrinsic movement was a substantial ingredient of its beauty. This leads to a deep study of the Wabi Sabi principles, a design philosophy that taught us that small imperfections are the way in which Nature tries to define what beauty is.

We wanted to get closer to nature, and that determination pushed us to the first experiment of developing a series of products that entailed the upcycling of materials that were going to waste and hence creating problems for communities.

One of them was the rice husk, made principally from Silicon a substance that was subject to experiments by the cement industry that would burn it and use the ashes in their products.

Rice is rooted in our whole being and by including it in our products we felt we could reach and revive the culture of our ancestors. We were touching nature, we were re-using natural waste and, by acquiring it from local farmers, we were having a great impact in the local community.

Development of the Husk® collection was only the beginning, as others such as Java®, made from the coffee grinds of the hospitality businesses, or Eggshell® quickly followed, forming the beginning of what we see as the future of design.

We are not capable to change the course of History on our own, but we count on you to do your small bit.

Never think you are too small or that your efforts are insignificant. Don't give in to desperation and keep in mind that what you do matters. We are all part of how we shape the future.

Every piece counts.

HUSK FEATURES

The scaffolding that supports our vision is made up of solid components that entail deep, thorough research, a passionate commitment and the hope of contributing to a better world in the long run: environmental consciousness, variety, high technology and versatility.

During the manufacturing process, we use up to 22% of rice husks discarded from the milling stage, i.e., there is a recycled agricultural component in the construction units that are obtained at the end of the production line in 20 different shapes, sizes and patterns, and in 6 organic tones that exude rustic warmth and sophistication alike.

The type of production we use requires minimal binding material and ensures an outstanding level of stability along with exceptional longevity and remarkable durability. It also makes them extremely lightweight and, therefore, easy to handle.

Having said this, it is not only the variety and the implemented high technology procedures that we are proud of. It is only fair to highlight the versatility that makes our materials equally suitable for green eco-friendly households, restaurants, boutiques, spas, organic cafés, etc.

Four principles, four cornerstones at the foundation of the vision that frames every step we take and every single product we offer our clients.



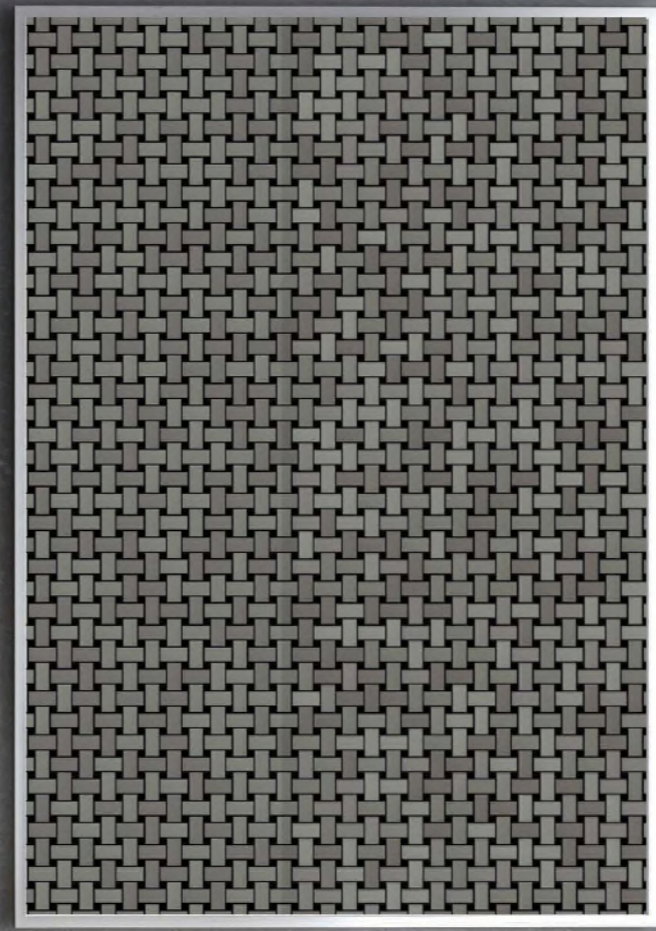
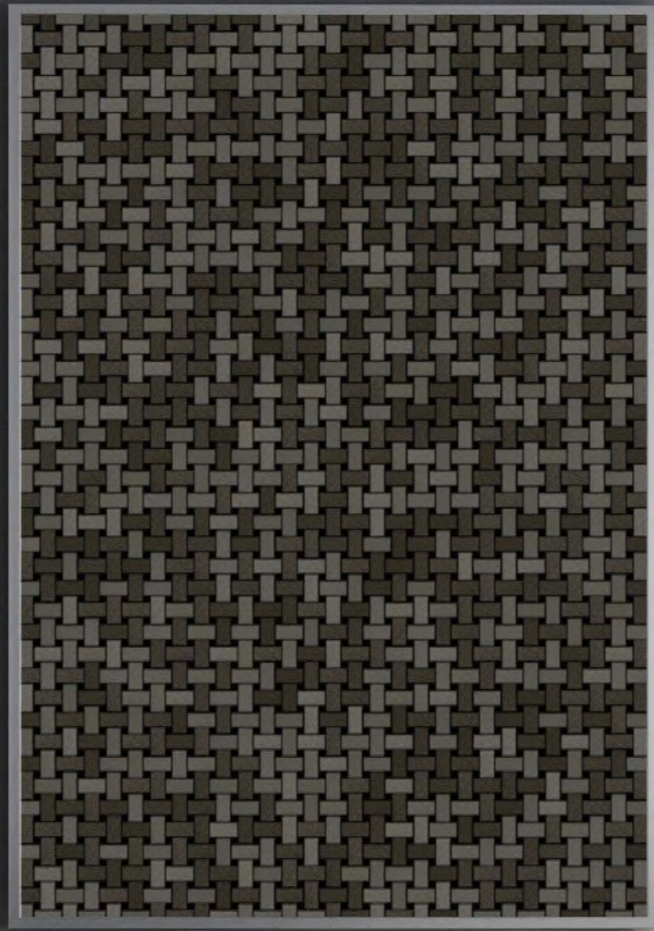
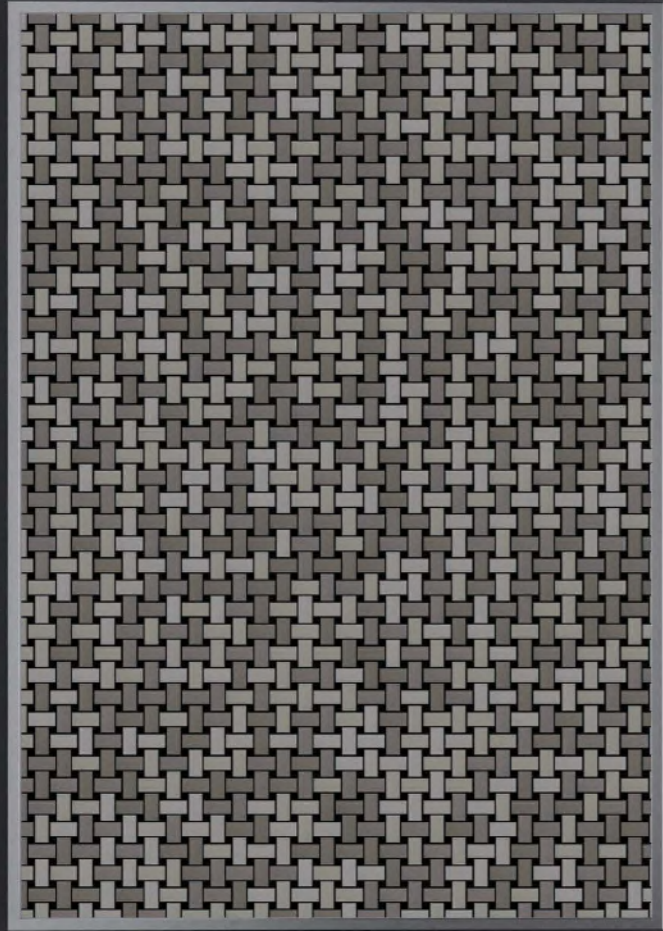




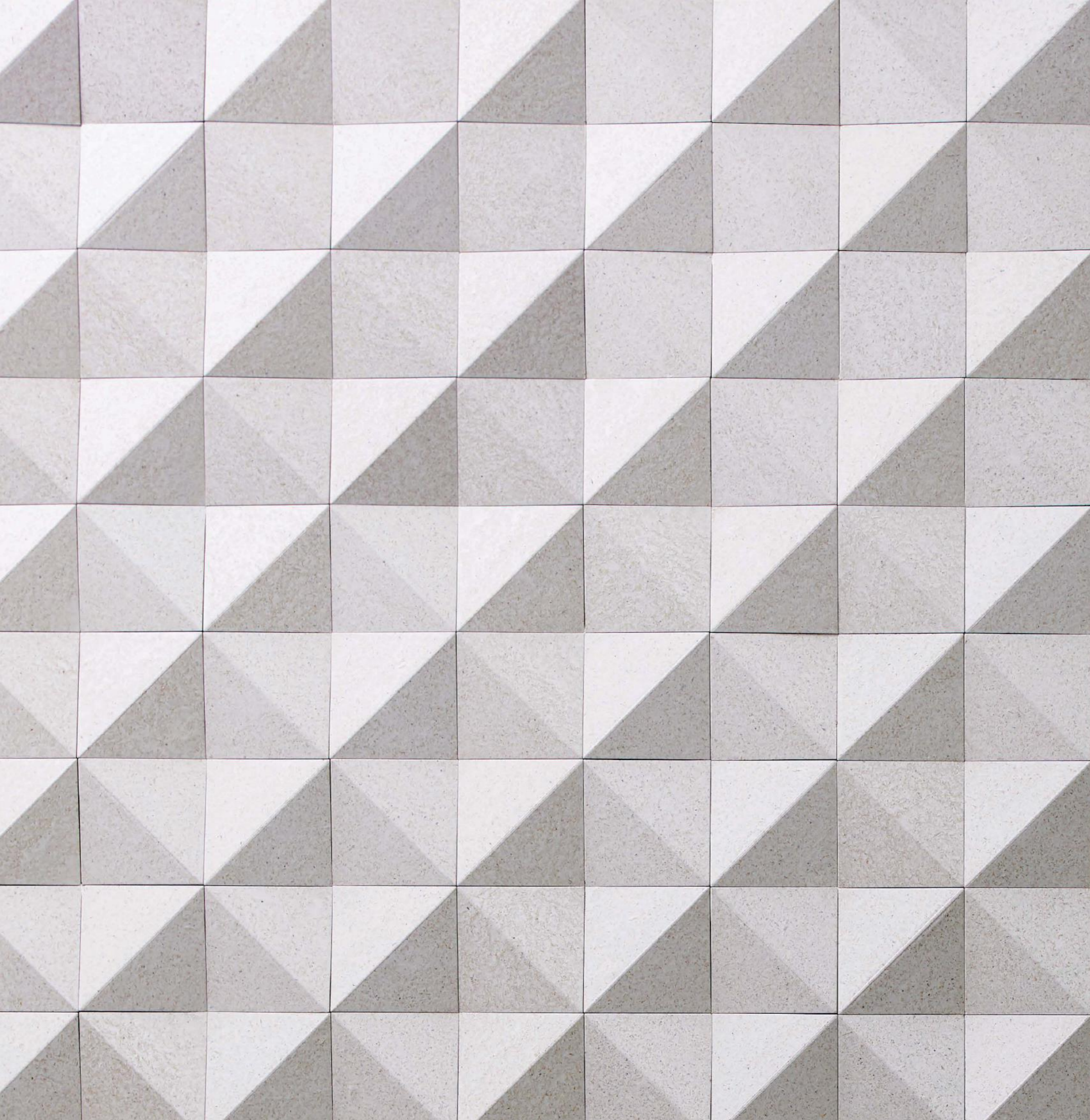












PATTERNS

Our aesthetic commitment is with the heritage of the Art masters that invented the craft of image making through mosaics.

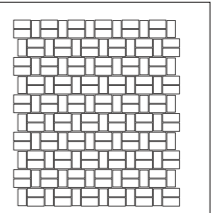
From Mesopotamia to Greece, from Pompei to Arabia, humans have been searching throughout the centuries for a way of representing the beauty of the physical and oneiric universe.

Imagination, as the universe, should have no limits, not in form or meaning, and definitely not in shape.

Sonite's technology allows us to have the biggest freedom in the mosaic world.



MADISON 1530



Technical Drawing

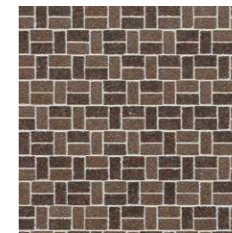
Color inspirations



017 Dune



800 Cornsilk



839 Walnut



900 Ash



910 Shadow Oak



999 Charcoal

PRODUCT DETAILS

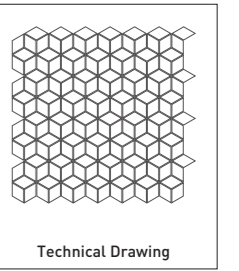
Sheet size: 33.0 x 28.8 cm / 13.0" x 11.3"

Tessera size as shown in the technical drawing

On the left page, Madison 1530 Walnut



COSMOS



Color inspirations



017 Dune



800 Cornsilk



839 Walnut



900 Ash



910 Shadow Oak



999 Charcoal

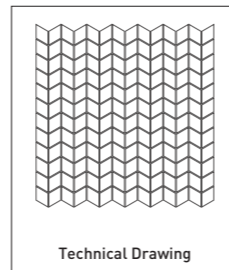
PRODUCT DETAILS

Sheet size: 29.3 x 29.9 cm / 11.4" x 11.7"

Tessera size as shown in the technical drawing

On the left page, Cosmos Ash

CHEVRON



Color inspirations



017 Dune



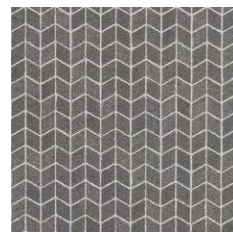
800 Cornsilk



839 Walnut



900 Ash



910 Shadow Oak



999 Charcoal

PRODUCT DETAILS

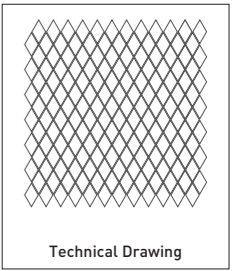
Sheet size: 29.2 x 28.9 cm / 11.5" x 11.4"
Tessera size as shown in the technical drawing

On the right page, Chevron Shadow Oak





EQUINOX



Technical Drawing

Color inspirations



017 Dune



800 Cornsilk



839 Walnut



900 Ash



910 Shadow Oak



999 Charcoal

PRODUCT DETAILS

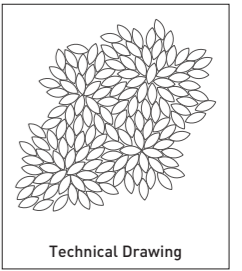
Sheet size: 29.4 x 31.7 cm / 11.6" x 12.5"

Tessera size as shown in the technical drawing

On the left page, Equinox Ash



MAGNOLIA



Color inspirations



017 Dune



800 Cornsilk



839 Walnut



900 Ash



910 Shadow Oak



999 Charcoal

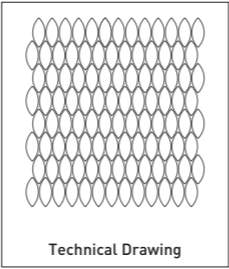
PRODUCT DETAILS

Sheet size: 33.4 x 34.6 cm / 13.1" x 13.6"
Tessera size as shown in the technical drawing

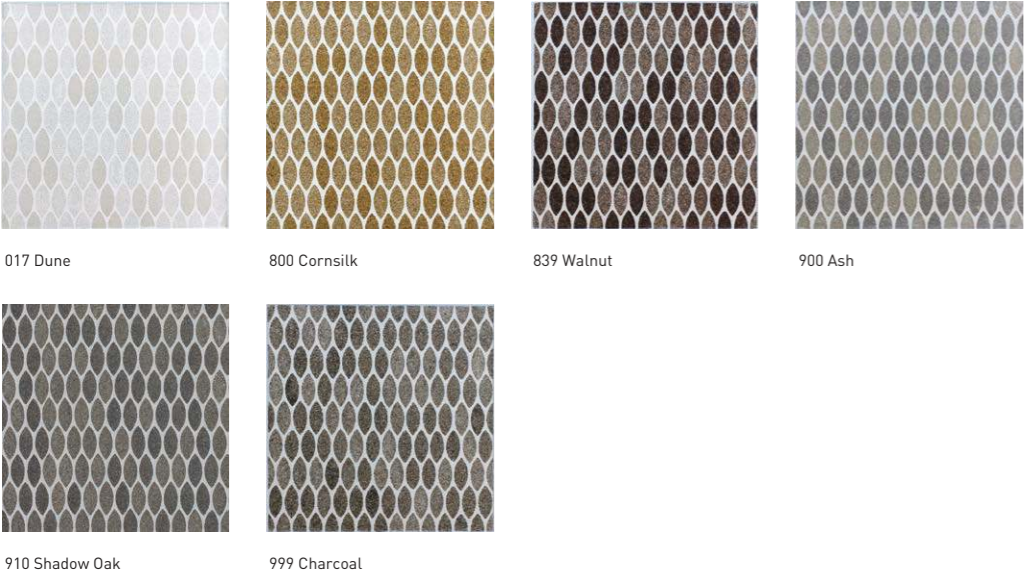
On the left page, Magnolia Cornsilk



ELLIPSE



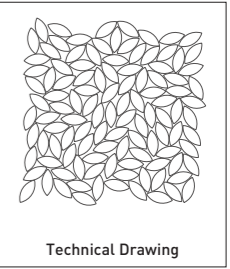
Color inspirations



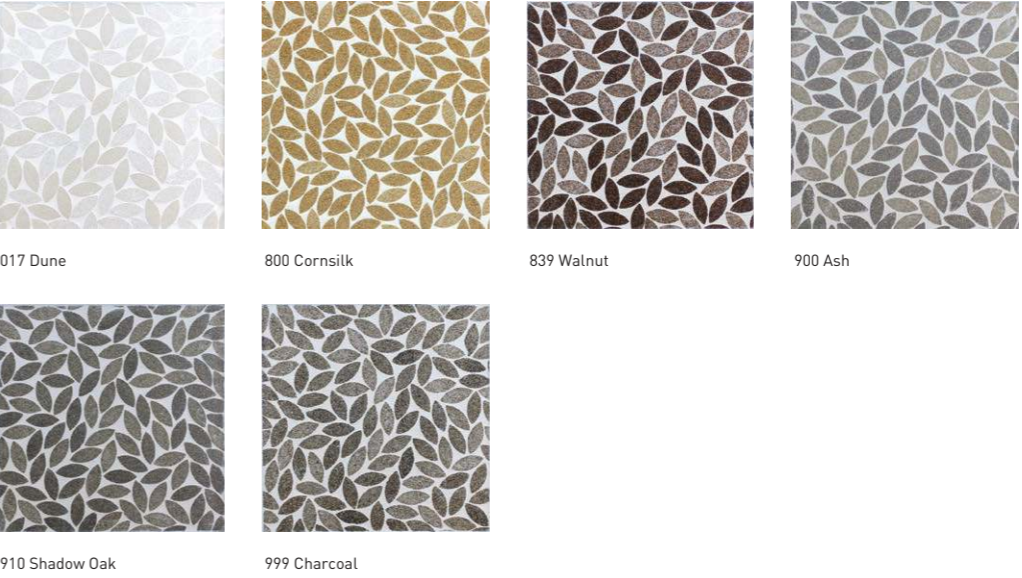
PRODUCT DETAILS
 Sheet size: 28.3 x 30.5 cm / 11.1" x 12.0"
 Tessera size as shown in the technical drawing

On previous page, Ellipse Shadow Oak

FOLIAGE



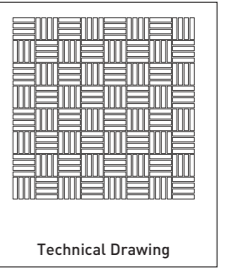
Color inspirations



PRODUCT DETAILS
 Sheet size: 31.4 x 30.6 cm / 12.4" x 12.0"
 Tessera size as shown in the technical drawing



BASKET WEAVE 735



Color inspirations



017 Dune



800 Cornsilk



839 Walnut



900 Ash



910 Shadow Oak



999 Charcoal

PRODUCT DETAILS

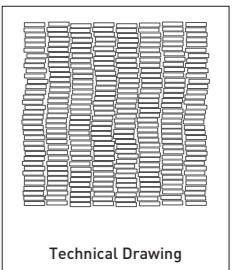
Sheet size: 29.0 x 29.0 cm / 11.4" x 11.4"

Tessera size as shown in the technical drawing

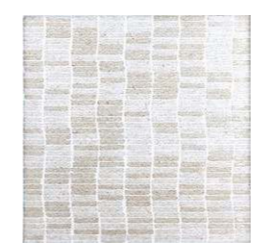
On the left page, Basket Weave 735 Walnut



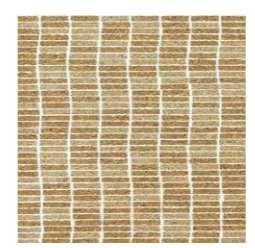
RIBBED 735



Color inspirations



017 Dune



800 Cornsilk



839 Walnut



900 Ash



910 Shadow Oak



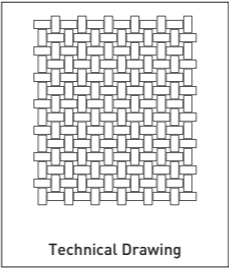
999 Charcoal

PRODUCT DETAILS

Sheet size: 29.0 x 30.9 cm / 11.4" x 12.2"
Tessera size as shown in the technical drawing

On the left page, Ribbed 735 Cornsilk

BRAID 1530



Color inspirations



017 Dune



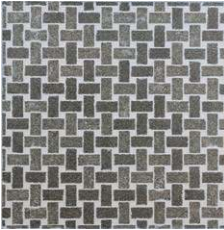
800 Cornsilk



839 Walnut



900 Ash



910 Shadow Oak



999 Charcoal

PRODUCT DETAILS

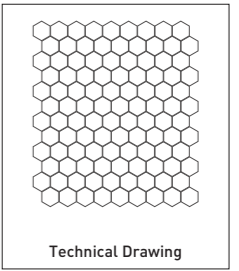
Sheet size: 28.7 x 33.5 cm / 11.3" x 13.2"
Tessera size as shown in the technical drawing

On the right page, Braid 1530 Dune





HONEYCOMB S



Technical Drawing

Color inspirations



017 Dune



800 Cornsilk



839 Walnut



900 Ash



910 Shadow Oak



999 Charcoal

PRODUCT DETAILS

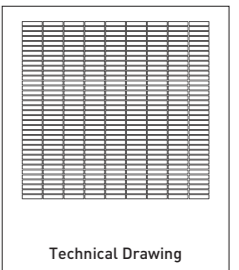
Sheet size: 27.7 x 32.2 cm / 10.9" x 12.7"

Tessera size as shown in the technical drawing

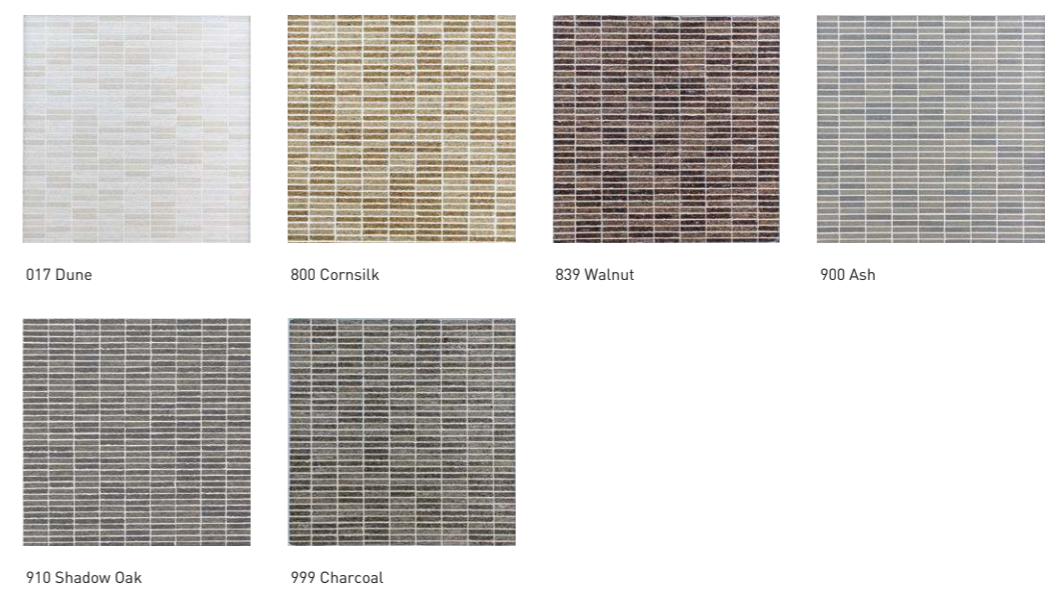
On the left page, Honeycomb S Ash



GRID 735



Color inspirations

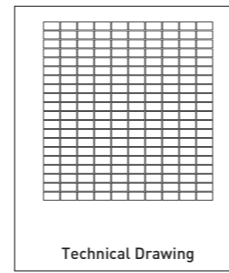


PRODUCT DETAILS
Sheet size: 31.7 x 29.9 cm / 12.5" x 11.8"
Tessera size: 7 x 35 mm / 0.3" x 1.4"

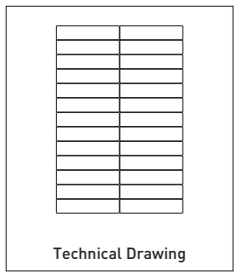
On the left page, Grid 735 Shadow Oak



GRID 1530



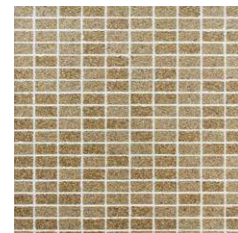
GRID 4018



Color inspirations



017 Dune



800 Cornsilk



839 Walnut



900 Ash



910 Shadow Oak



999 Charcoal

PRODUCT DETAILS

Sheet size: 28.4 x 33.0 cm / 11.2" x 13.0"
Tessera size: 15 x 30 mm / 0.6" x 1.2"

On previous page, Grid 1530 Charcoal

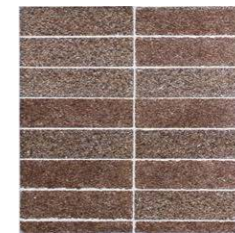
Color inspirations



017 Dune



800 Cornsilk



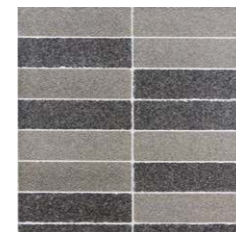
839 Walnut



900 Ash



910 Shadow Oak



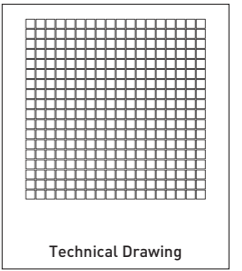
999 Charcoal

PRODUCT DETAILS

Sheet size: 36.7 x 54.4 cm / 14.4" x 21.4"
Tessera size: 40 x 186 mm / 1.6" x 7.3"



GRID 15



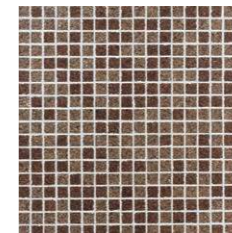
Color inspirations



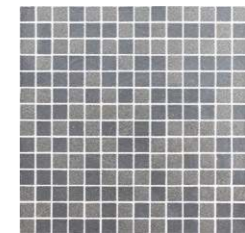
017 Dune



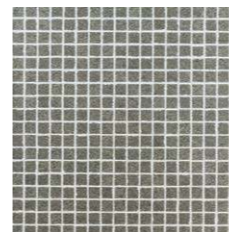
800 Cornsilk



839 Walnut



900 Ash



910 Shadow Oak



999 Charcoal

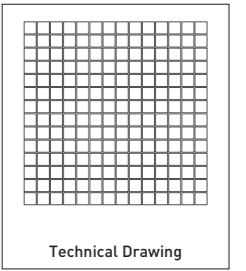
PRODUCT DETAILS

Sheet size: 30.5 x 30.5 cm / 12.0" x 12.0"
Tessera size: 15 x 15 mm / 0.6" x 0.6"

On the left page, Grid 15 Dune



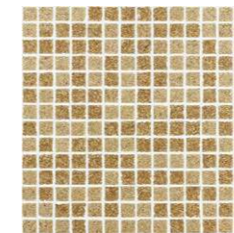
GRID 20



Color inspirations



017 Dune



800 Cornsilk



839 Walnut



900 Ash



910 Shadow Oak



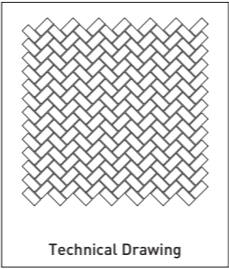
999 Charcoal

PRODUCT DETAILS

Sheet size: 30.5 x 30.5 cm / 12.0" x 12.0"
Tessera size: 20 x 20 mm / 1.2" x 1.2"

On the left page, Grid 20 Walnut

HERRINGBONE 1530



Color inspirations



017 Dune



800 Cornsilk



839 Walnut



900 Ash



910 Shadow Oak



999 Charcoal

PRODUCT DETAILS

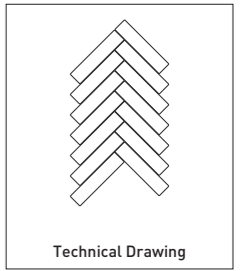
Sheet size: 30.5 x 31.2 cm / 12.0" x 12.3"
Tessera size: 15 x 30 mm / 0.6" x 1.2"

On the right page, Herringbone 1530 Charcoal





HERRINGBONE 4018



Color inspirations



017 Dune



800 Cornsilk



839 Walnut



900 Ash



910 Shadow Oak



999 Charcoal

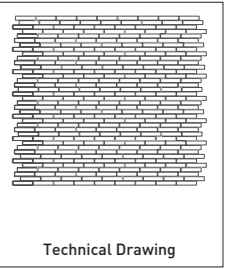
PRODUCT DETAILS

Sheet size: 28.6 x 41.5 cm / 11.2" x 16.3"
Tessera size: 40 x 186 mm / 1.6" x 7.3"

On the left page, Herringbone 4018 Cornsilk



BAMBOO 735



Color inspirations



017 Dune



800 Cornsilk



839 Walnut



900 Ash



910 Shadow Oak



999 Charcoal

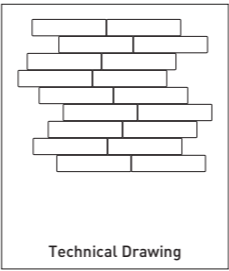
PRODUCT DETAILS

Sheet size: 32.0 x 29.3 cm / 12.6" x 11.5"
Tessera size: 7 x 35 mm / 0.3" x 1.4"

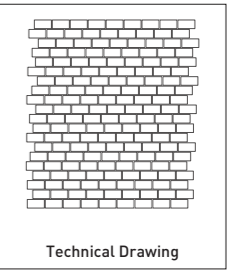
On the left page, Bamboo 735 Cornsilk



BAMBOO 4018



BAMBOO 1530



Color inspirations



017 Dune 800 Cornsilk 839 Walnut 900 Ash



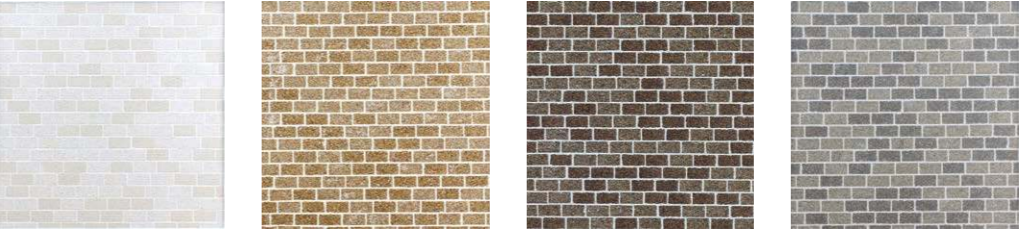
910 Shadow Oak 999 Charcoal

PRODUCT DETAILS

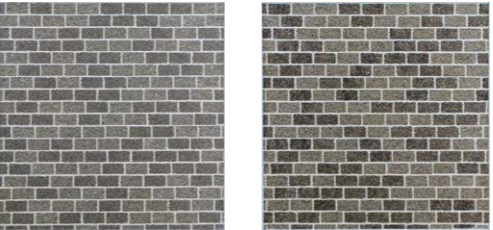
Sheet size: 36.7 x 37.6 cm / 14.4" x 14.8"
Tessera size: 40 x 186 mm / 1.6" x 7.3"

On previous page, Bamboo 4018 Ash

Color inspirations



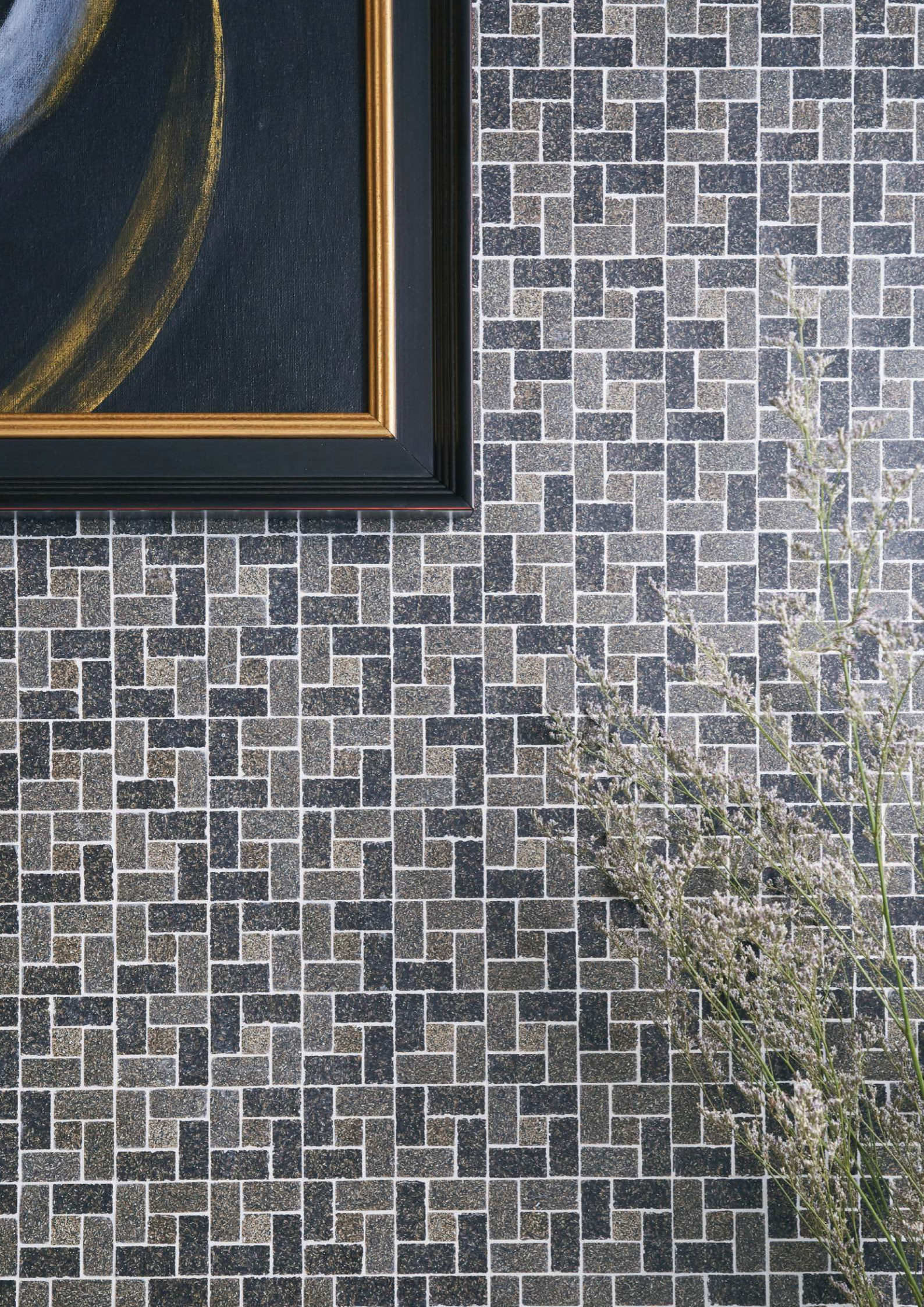
017 Dune 800 Cornsilk 839 Walnut 900 Ash



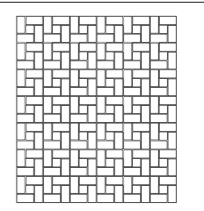
910 Shadow Oak 999 Charcoal

PRODUCT DETAILS

Sheet size: 28.4 x 33.0 cm / 11.2" x 13.0"
Tessera size: 15 x 30 mm / 0.6" x 1.2"



BOND 1530



Technical Drawing

Color inspirations



017 Dune



800 Cornsilk



839 Walnut



900 Ash



910 Shadow Oak



999 Charcoal

PRODUCT DETAILS

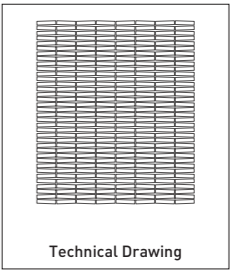
Sheet size: 28.5 x 33.2 cm / 11.2" x 13.1"

Tessera size: 15 x 15 mm / 0.6" x 0.6" , 15 x 30 mm / 0.6" x 1.2"

On the left page, Bond 1530 Charcoal



LAIDA 735

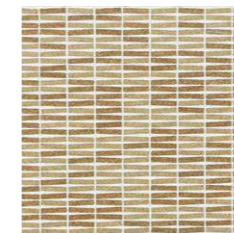


Technical Drawing

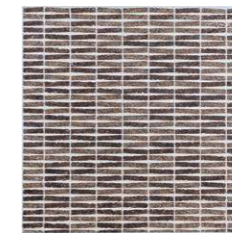
Color inspirations



017 Dune



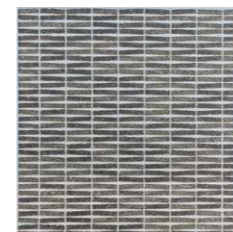
800 Cornsilk



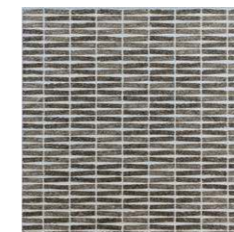
839 Walnut



900 Ash



910 Shadow Oak



999 Charcoal

PRODUCT DETAILS

Sheet size: 28.3 x 32.7 cm / 11.1" x 12.9"

Tessera size as shown in the technical drawing

On the left page, Laida 735 Cornsilk

HERRINGBONE 735



Color inspirations



017 Dune



800 Cornsilk



839 Walnut



900 Ash



910 Shadow Oak



999 Charcoal

PRODUCT DETAILS

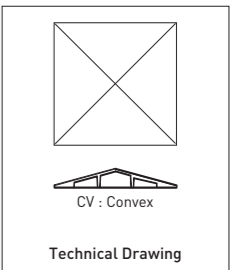
Sheet size: 31.5 x 29.7 cm / 12.4" x 11.7"
Tessera size: 7 x 35 mm / 0.3" x 1.4"

On the right page, Herringbone 735 Dune

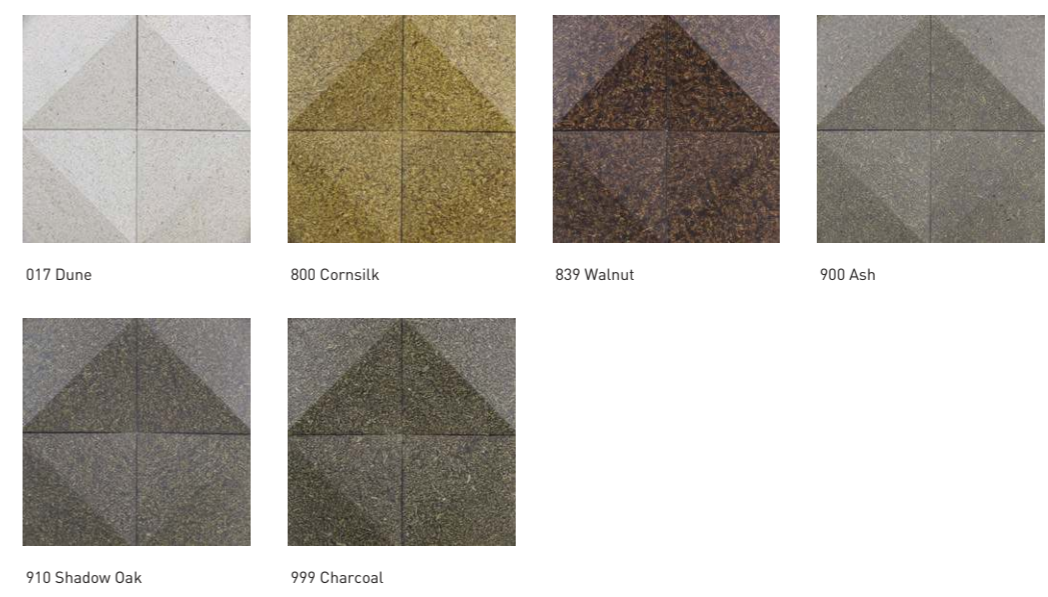




ORIGAMI



Color inspirations



PRODUCT DETAILS

Sheet size: 10.0 x 10.0 cm / 4.0" x 4.0"
Tessera size as shown in the technical drawing

On the left page, Origami Dune

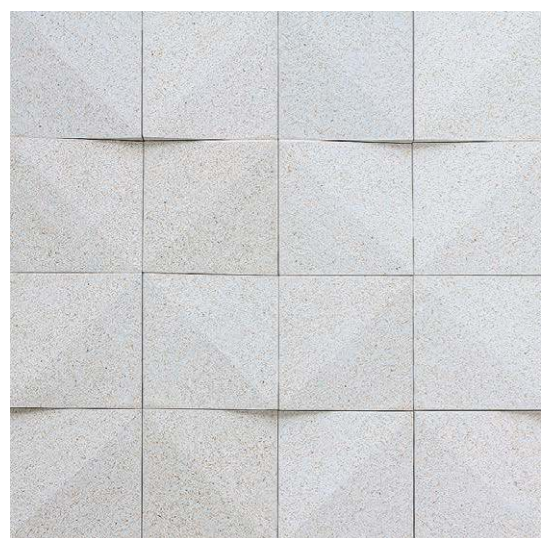
ORIGAMI PATTERN



Pattern 1



Pattern 2



Pattern 3





AWARDS

DEmark	Design Excellence Award for Husk Objects	2018
Architect Innovative Product Awards	ASA Booth design award in green	2017
The Thailand Creative & Design Center	Gold Medal	2016
World Interiors News – Shortlisted	WIN Awards'16 for Husk Collection	2016
Good Design	Husk Collection	2016
Material Connexion	Material Excellence for Husk Collection	2016

PRODUCT TESTING RESULTS

Technical Characteristics*	Results	Test Method
Coefficient of Friction by Static methods - Dry	0.64	ASTM C1028 : 07
Dynamic Coefficient of Friction - Dry	0.67	ANSI A 137.1 : 2012
Hardness	76-82	Shore D
Resistance to Chemical	GLA, GA	ISO 10545-13 : 1995
Surface Burning Characteristics	Class B	ASTM E84-18B
VOC Emissions	A+	French VOC
Water Absorption	< 4.5%	ISO 10545-3 : 1995

*Based on mosaic 15 x15 mm.

General Information

Sonite products must be kept away from high heat and fires, including direct sunlight and open flames. Do not set curling irons, blow dryers, clothing irons, or other hot objects directly on the surface of the product. For best results, the surface area to be covered should be completely flat and smooth, with all corners perpendicular.

Sonite Products

Differences and variations in shade, flow, grain, tonality, shape, size, veining, moisture absorption, surface finish, color (including discoloration and/or fading, and/or yellowing over time), texture, and coefficient of friction are inherent characteristics and/or occur naturally during the manufacturing process and are not, and shall not be considered, defects in the Sonite products.

Application

Please refer to any relevant technical specifications to determine whether a collection is appropriate for an application. Any specifications or guidelines provided by Sonite are merely general guidelines. They are not instructions for any particular use in any particular location.

Sonite products are primarily intended for use as indoor decorative wall coverings.

BUYER ACKNOWLEDGES THAT SONITE PRODUCTS MUST BE KEPT AWAY FROM HIGH HEAT (SONITE PRODUCTS ARE NOT INTENDED TO WITHSTAND TEMPERATURES IN EXCESS OF 80° C (176°F) AND/OR FIRES.

Sonite products are rated for use in steam rooms with operating temperatures less than 80° C (176° F) and for wet application (showers baths, and indoor pools). Epoxy based adhesives and grout are required for installation in steam rooms and wet environments.

Sonite recommends Laticrete 254 platinum, Weber fix plus, and Weber epoxy that have been tested and approved for normal application with Sonite products. For applications with large ambient temperature variation or light traffic floor applications, epoxy based adhesives and grout are recommended.

We believe that the information in this catalog is reliable and offer the information in good faith without guarantee, as conditions and methods of use are beyond our control. We recommend prospective buyers perform their own testing to determine product suitability for all purposes before adopting Sonite on a commercial or residential scale. In no case is Sonite Innovative Surfaces Co.,Ltd. is liable for direct, consequential, economic, or other damages. Sonite Innovative Surfaces Co.,Ltd. disclaims all

other warranties, expressed or implied, including the warranty of merchantability and fitness for a particular purpose.

The data that we have provided is to the best of our knowledge accurate and based on testing for official certifying laboratories. However, each pattern, size and material may be perform differently under different applications and it is up to each customer to determine the suitability of the material for each of their intended application.

NOTHING IN THIS CATALOG SHALL BE CONSTRUED IN ANY WAY TO CONFLICT WITH SONITE'S PRODUCT TESTING RESULTS OF SALE.

Sonite Head Office

Sonite Innovative Surfaces Co., Ltd.
253/43 Soi Latphrao 80 (Section 22)
Latphrao Rd., Wangthonglang,
Bangkok 10310 Thailand

T: +66 2935 5575 (ext.6)
F: +66 2935 5883

Sonite North America

Sonite Innovative Surfaces
Marketing Office
865 Production Place
Newport Beach, CA - 92663 USA.

T: +1 949 612 7173

info@sonitesurfaces.com
www.sonitesurfaces.com

sonitesurfaces.com