



SONITE

Innovative Surfaces



Safari is an expedition -- an observance of the beauty of wild animals and nature in Africa. The majestic beauty of the Serengeti plain in East Africa, spanning from southwestern Kenya to Tanzania, inspires the latest Sonite collection, SAFARI. Serengeti's vast savanna and migration paths are rich in colors and patterns, conjuring images of a romantic history. Humans are humbled by the presence of the wild.

Safari mosaics lend to interior spaces the lush colors and lively forms, paying tributes to one of Africa's most wondrous regions. Join us on a design safari as we explore the expressive patterns of Sonite's Safari collection.

NILE CROC

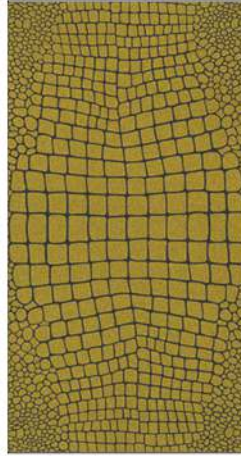
Serengeti lakes are home to the famed Nile crocodile, the largest descendent of prehistoric crocodiles. With an intricately patterned underbelly, the animal frequently is harvested for its high-quality leather. Of course no animals are harmed in the production of Sonite mosaics. Instead, our innovative technologies and unique manufacturing processes make possible a pattern once thought too complex for commercial mosaic application. A palette of luxurious hues and infinitely repeatable patterns make Sonite's Nile Croc mosaic an eye-catching interior enhancement.



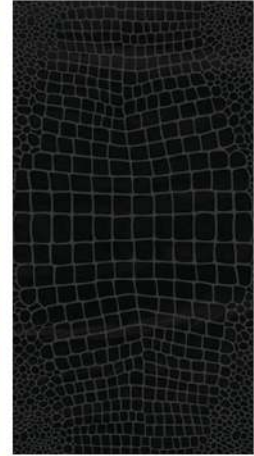
Nile Croc 01
SM-11S-619



Nile Croc 02
SM-21S-946



Nile Croc 03
SM-20S-800



Nile Croc 04
SM-61S-919



Nile Croc 05
SM-61S-804



Nile Croc 06
SM-61S-828



Nile Croc 07
SM-61S-320



Nile Croc 08
SM-60S-554

GAMBA

In Tanzania the Swahili word for reptile or fish scales is “gamba”, and it’s an aptname for this Serengeti mosaic. The most geometric of the collection’s patterns, Gamba is certainly one of the most versatile as well. Much like the animals that have inspired it, Gamba is highly adaptable and infinitely versatile, allowing for changes in mood or tone with a simple alteration of tile color or series.



Gamba 01
SM-60S-023



Gamba 02
SM-20S-411



Gamba 03
SM-20S-800



Gamba 04
SM-61S-804
SM-61S-807

STRIPED

Of all animals, perhaps none is as recognizable as the zebra. The equine's distinctive marking has caught the eye of many a painter and poet through the ages ... and now Sonite creates its own ode in mosaic form. Designed for seamless installation and engaging graphic repeats, Zebra provides optimum visual impact.



Zebra 01
SM-16S-041
SM-16S-997



Zebra 02
SM-16S-362
SM-16S-997



Zebra 03
SM-16S-414
SM-16S-997



Zebra 04
SM-16S-883
SM-16S-997



Zebra 05
SM-16S-883
SM-16S-414



Zebra 06
SM-16S-041
SM-16E-908



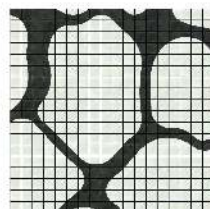
Zebra 07
SM-11E-119
SM-16S-813



Zebra 08
SM-60S-814
SM-61S-804

DAPPLE

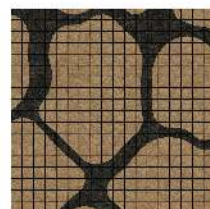
A giraffe's patterned coat serves as camouflage and allows the stately animal to blend with the light and shade of woodlands. Sonite's Giraffe mosaic, far from obscuring, instead lends a striking savanna-like mood to any room. A charismatic mosaic that exudes the romance and adventure of African travels.



Giraffe 01
SM-16S-041
SM-16S-997



Giraffe 02
SM-61S-805
SM-60S-023



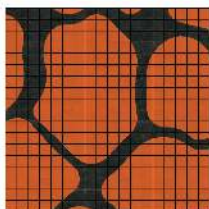
Giraffe 03
SM-21S-812
SM-21S-966



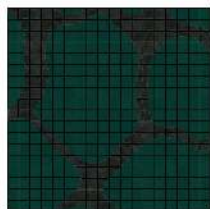
Giraffe 04
SM-61S-804
SM-61S-140



Giraffe 05
SM-11S-300
SM-11E-210



Giraffe 06
SM-12E-363
SM-16S-909



Giraffe 07
SM-12E-430
SM-16S-909



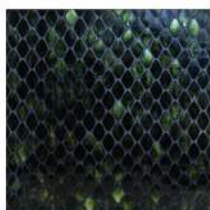
Giraffe 08
SM-12E-702
SM-16S-909



Gamba 05
SM-61S-320
SM-61S-322



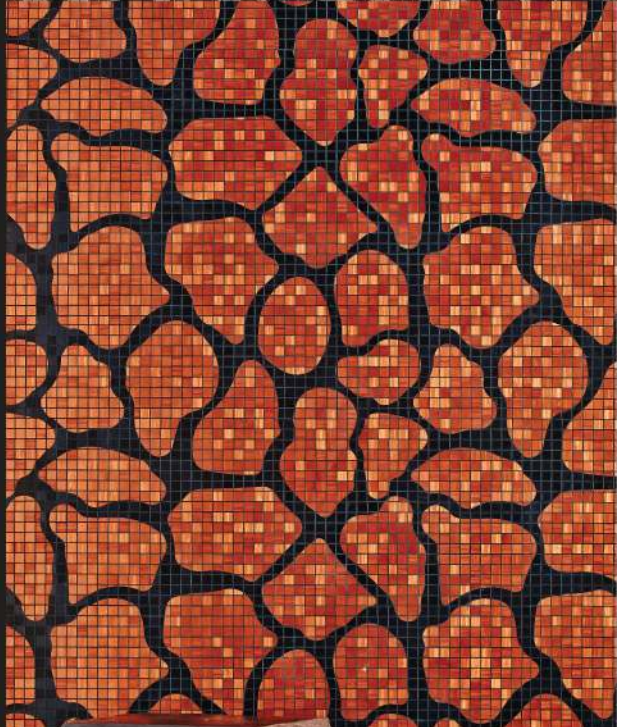
Gamba 06
SM-61S-920
SM-61S-927



Gamba 07
SM-61S-450



Gamba 08
SM-60S-434



Sonite Innovative Surfaces
3216 S.Broadway Los Angeles,
CA 90007
m : [818] 974-9818
t : [949] 612 7173
f : [949] 612 7173
e : marketing@sonitesurfaces.com

Crystal Design Center Building D110
1420 Soi Latphrao 87 (Chantrasuk)
Praditmanutham Rd., Klongjun Bangkokpi,
Bangkok 10240 Thailand
t : +66 2102 2105 +66 2102 2107
f : +66 2102 2106
e : internationalmarketing@sonitesurfaces.com

Sonite Office
Sonite Innovative Surfaces Co.,Ltd.
253/43 Soi Latphrao 80 (Section 22)
Latphrao Rd., Wangthonglang,
Bangkok 10310 Thailand
t : +66 2935 5575-76
f : +66 2935 5883

www.sonitesurfaces.com