



SONITE

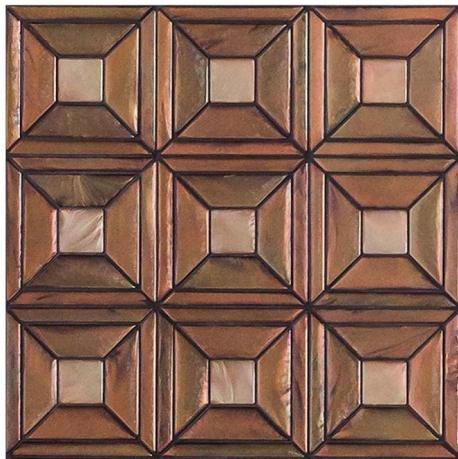
Innovative Surfaces



METROPOLITAN

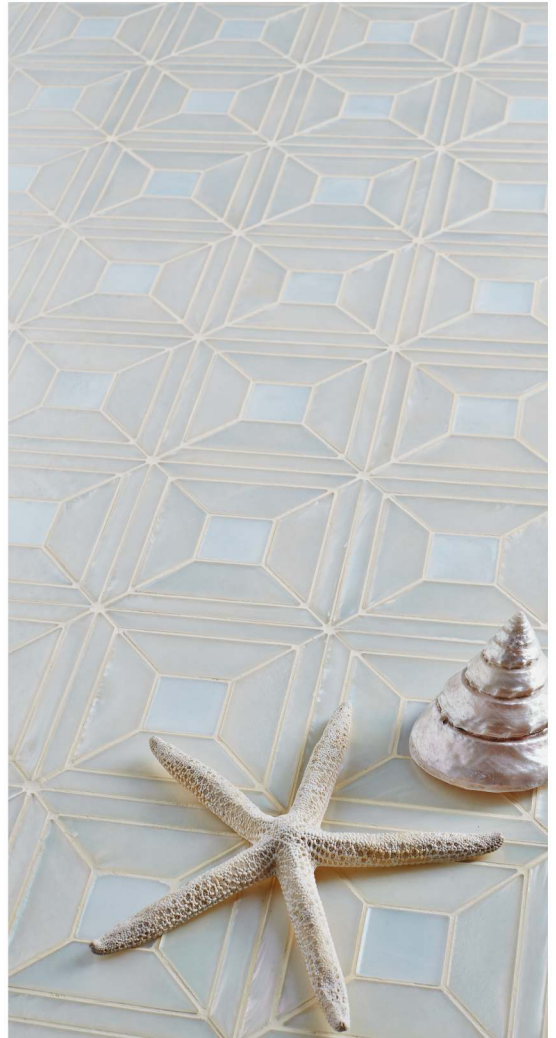
As a company often working alongside architects and interior designers, we are constantly inspired by the beautiful buildings and spaces we encounter. In this light, Sonite has created the Metropolitan collection of mosaic patterns. Taking key creative cues from distinctive styles and forms, each pattern much like great architecture itself – at once timeless yet very much of the moment.

Sonite's Metropolitan patterns are markedly thinner and lighter than other mosaics. This makes them easy to install on a variety of surface types and areas including walls, countertops, ceilings, and corners and edges, as well as on substrates such as gypsum, glass, cement, wood and other material.



Keystone

SM-60S-820 Flagpen
SM-60S-819 Brownlip



Broadway

SM-60S-917 Oyster White
SM-60S-023 Capiz



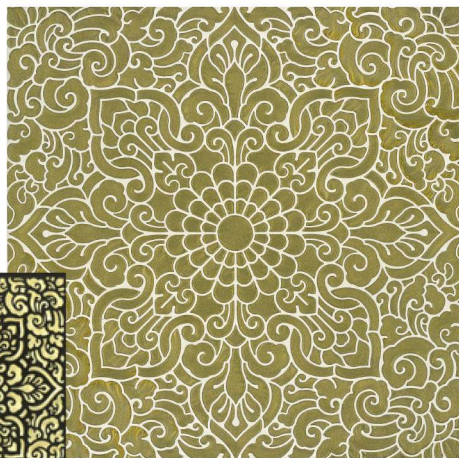
Paladio

SM-60S-101 Yellowlip
SM-60S-103 Goldlip

SIAMESE

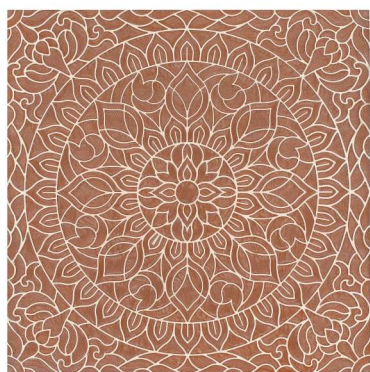
Over time, cultures develop an innate visual identity through a mix of both their fine and applied arts. Thailand's (aka "Siam") aesthetic is now characterized by ornate tropical florals coupled with complex geometric motifs; typically differing from others in Asia by their relative flatness, stylized line quality and impressive graphic density.

Today, Sonite's innovative artisans have crafted mosaics to embrace and reflect the aesthetic essence of Thai design. The Siamese Collection features extraordinary graphic details never beforeseen in commercial mosaics and each repeatable pattern is composed of Sonite's award-winning (and highly durable) composite materials. Now available in an opulent palette of both color & texture, Siamese mosaics exude the affluence and Oriental splendor of ancient Siam.



Kannika
Size 14.5 x 14.5 cm.
SM-20S-800 Rich Gold

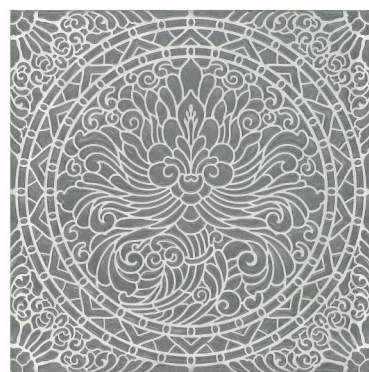
Kannika
Size 30 x 30 cm.
SM-20S-800 Rich Gold



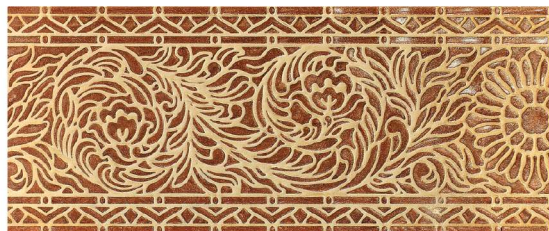
Morning Lotus
Size 30 x 30 cm.
SM-42S-208 Crabapple



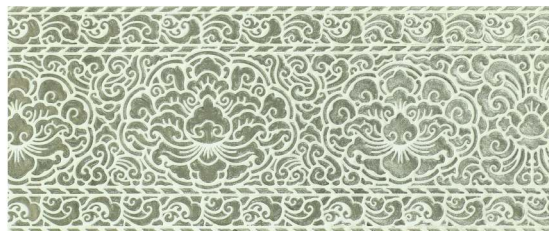
Jasmine
Size 30 x 30 cm.
SM-13S-844 Woodsmoke



Benjarong
Size 30 x 30 cm.
SM-20S-946 Silver



Banyan
Size 9.8 x 28.6 cm.
SM-20S-819 Caramel



Waterlily
Size 9.8 x 28.6 cm.
SM-20S-855 Castel Wall



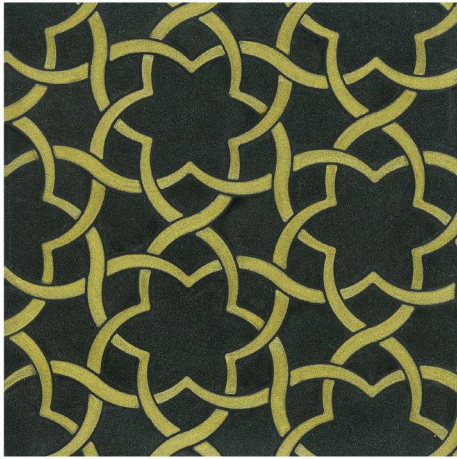
Rattana 1
Size 18.8 x 8.4 cm.
SM-20S-938 Opal Gray



Rattana 2
Size 15.8 x 8.5 cm.
SM-20S-938 Opal Gray

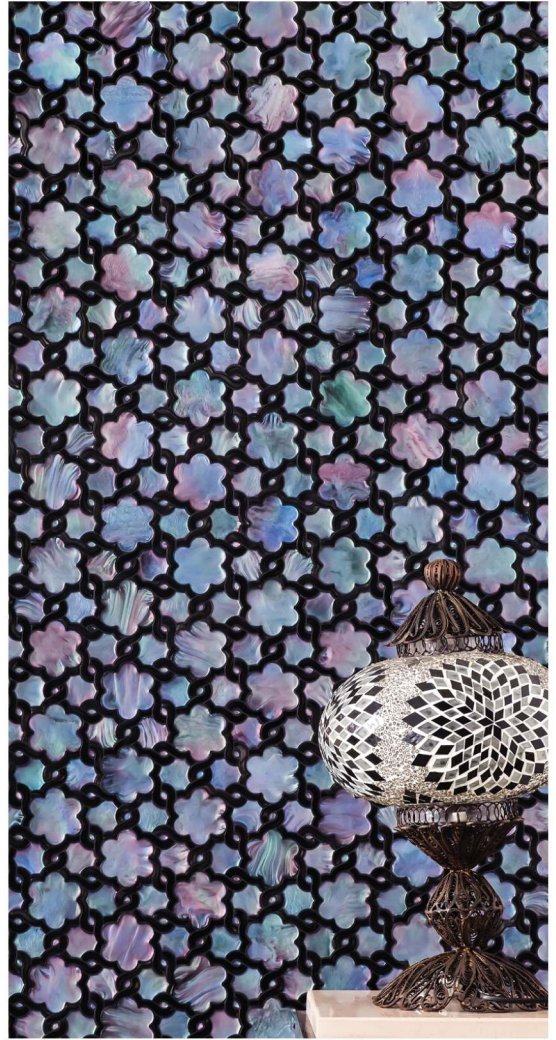
FLORENTINE

Perhaps no other European city is as responsible for the continent's masterpieces more so than Florence. Art created in the "Florentine style" literally defined the Renaissance and were rooted in symmetry, proportion and geometry. These 3 design tenets are collectively at the core of Sonite's impressive Florentine collection – mosaics crafted with a balance of high-tech manufacturing and time-honored craftsmanship. Available in repeatable (and geometrically perfect) sheets, Florentine mosaics are easy to install, easy to maintain and suitable for virtually any interior. Our ode to the Renaissance begins with Florentine; luxurious mosaics rooted in the past but absolutely developed for today's modern interiors.



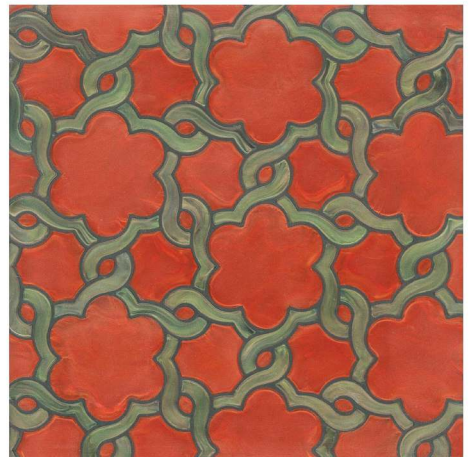
Medici

SM-20S-966 Caviar
SM-20S-800 Rich Gold



Boboli

SM-60S-811 Natural Mop
SM-11S-309 Burgundy



Tuscany

SM-11S-311 Picante
SM-60S-412 Smoked Greenlip





Sonite Innovative Surfaces
3216 S.Broadway Los Angeles,
CA 90007
m : [818] 974-9818
t : [949] 612 7173
f : [949] 612 7194
e : marketing@sonitesurfaces.com

Crystal Design Center Building D110
1420 Soi Latphrao 87 (Chantrasuk)
Praditmanutham Rd., Klongjun Bangkoki,
Bangkok 10240 Thailand
t : +66 2102 2105 +66 2102 2107
f : +66 2102 2106
e : internationalmarketing@sonitesurfaces.com

Sonite Office
Sonite Innovative Surfaces Co.,Ltd.
253/43 Soi Latphrao 80 (Section 22)
Latphrao Rd., Wangthonglang,
Bangkok 10310 Thailand
t : +66 2935 5575-76
f : +66 2935 5883

www.sonitesurfaces.com