

FLORA & FAUNA MURAL



SONITE
Innovative Surfaces



FLORA & FAUNA MURAL

Flora, the Latin root of “floral”, originally referred to Flora, the goddess of flowers, while in Roman mythology Fauna was the sister of Faunus, a benevolent forest goddess. In this spirit Sonite celebrates the enchanting beauty of nature with a collection of organically inspired mosaics. The Flora and Fauna mosaic collection is especially apt for interior spaces where outdoor elements serve to enhance indoor settings. Available in a range of mixed-material colors, with each mosaic sheet comprising hundreds of individual pieces allowing for seamless pattern repeats.



Crocus

The crocus' ability to thrive from winter to early spring is impressive. At Sonite we extoll this hearty flower with a mural pattern echoing Art Deco stained glass. Like the flower itself, the beauty of a Crocus mural lies in its adaptability. This exceedingly versatile design can impart either boldly masculine or gently feminine effects depending on color and tile combination used.



1-Snow Blossom

COLORS - 004-005-011 Ocean White
004-005-014 City Night
004-005-018 Snowflake Honey
004-005-022 Snowflake
SIZE - 40 x 40 cm
ORIENTATION - Light Gray



2-Summer Flower

COLORS - 004-115-011 Pease
004-115-012 Pease Blue
004-115-013 Pease
004-115-014 Pease
SIZE - 40 x 40 cm
ORIENTATION - Brown



3-Mountain Bloom

COLORS - 004-010-001 Pease Brown
004-010-010 Daffodil
004-010-011 Pease
004-010-020 Chili Pepper
SIZE - 40 x 40 cm
ORIENTATION - Brown



4-Twilight Mist

COLORS - 004-000-014 Black Lip
004-000-014 Sapphire Brown
004-000-015 Purple
004-000-016 Daffodil
SIZE - 40 x 40 cm
ORIENTATION - Brown

Momiji

The momiji, or Japanese maple leaf, is a much-loved decorative motif found throughout Japan. Sonite's own Momiji mural line pays tribute to this timeless imagery with textural embellishing of the figure's colorful leaves seen to gently drop in the autumn sun.



1-Nara Autumn

COLORS - 004-120-011 Red Coat
004-120-012 Summer Pumpkin / 004-120-013 Festival Pumpkin
004-120-042 Green / 004-120-024 Strawberry
004-000-100 Light Yellow
SIZE - 40 x 40 cm
ORIENTATION - Light Gray



2-Tokyo Night

COLORS - 004-000-004 Champagne Night
004-000-023 Copper Tea / 004-000-011 Cannon
004-000-011 Pease / 004-000-020 Cannon Brown
004-010-024 Frost Gray
SIZE - 40 x 40 cm
ORIENTATION - Black



3-Kyoto Summer

COLORS - 004-010-010 Daffodil
004-010-011 Willow / 004-010-012 Starburst
004-010-004 Cannon Brown
004-000-014 Sapphire Gold
SIZE - 40 x 40 cm
ORIENTATION - Brown



4-Nagoya Winter

COLORS - 004-120-011 Red Coat
004-120-001 Cannon Pumpkin / 004-120-012 Festival Pumpkin
004-000-023 Copper / 004-120-011 Strawberry
004-000-004 Gold
SIZE - 40 x 40 cm
ORIENTATION - Brown

**Custom colors are available on request.

Rose Vine

The queen of all flowers, the rose has long been admired across cultures. Our own admiration sees expression in Sonite's Rose Vine mural. As roses gracefully branch out, subtle color variations in the mosaic accentuate each flower for a smooth and unimpeded visual progression.



2-English Garden

COLORS - 3M 414-598 Berkeley
3M 415-339 Raspberry / 3M 415-821 Classic Orange
3M 415-423 Olive Branch / 3M 415-411 Crystal White
SIZE - 40 x 40 cm
GROUTING - Black



1-Mughal Garden

COLORS - 3M 415-432 Herald Stone
3M 415-425 Sapphire / 3M 415-417 Willow
3M 415-894 Chastal Brown
3M 415-419 Indigo
SIZE - 40 x 40 cm
GROUTING - Black



4-Eden Mauve

COLORS - 3M 408-411 Cassidy
3M 415-424 Coral Stone
3M 415-423 Sapphire
3M 415-440 Leaf Green / 3M 415-411 Egon
SIZE - 40 x 40 cm
GROUTING - Black



3-Versailles Garden

COLORS - 3M 415-521 Dazzling
3M 415-128 Chili Pepper
3M 415-894 Chastal Brown
3M 405-23 City Night
SIZE - 40 x 40 cm
GROUTING - Light Grey

Spring Rose

The first sighting of a rose in spring is often likened to the blossoming of new love. In Sonite's Spring Rose mural, roses rain down from the sky as if having been lovingly tossed by admiring fans unto their favorite diva.



2-Mauve Bouquet

COLORS - 3M 405-411 Dazzling Stone
3M 415-482 Leaf Green / 3M 415-423 Sapphire
3M 415-424 Coral Stone
SIZE - 40 x 40 cm
GROUTING - Brown



1-Golden Petals

COLORS - 3M 405-427 Capri
3M 415-417 Flame
3M 415-139 Indigo
3M 415-141 Almond Oil
SIZE - 40 x 40 cm
GROUTING - White



4-Crimson Corsage

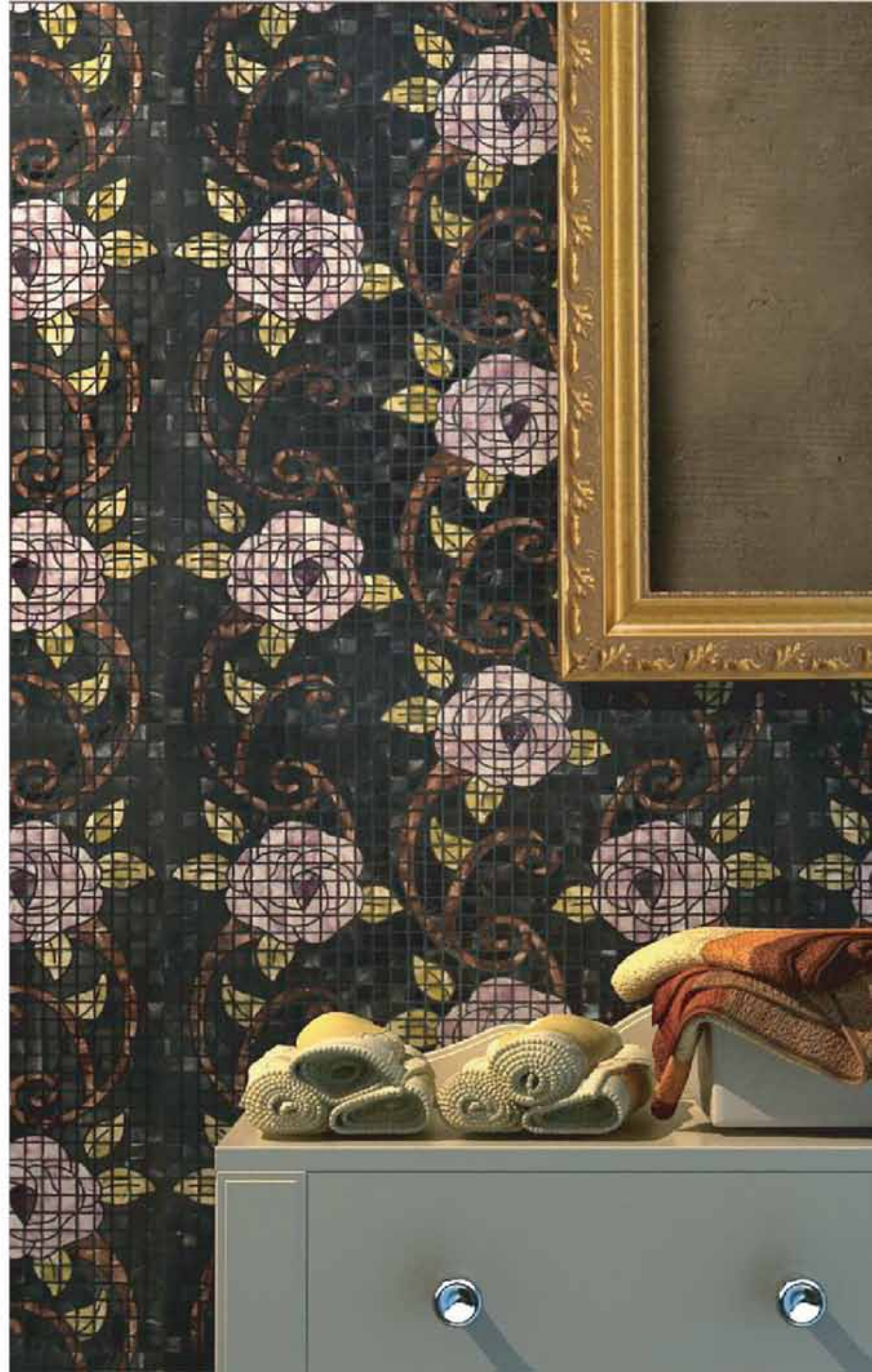
COLORS - 3M 408-412 Starburst Shady
3M 415-398 Prism
3M 415-133 Chili Pepper
3M 415-721 Garnet
SIZE - 40 x 40 cm
GROUTING - Black



3-Botanic Pearl

COLORS - 3M 415-454 Sirenix
3M 415-417 Flame
3M 405-406 Light Yellow
3M 405-423 Capri
SIZE - 40 x 40 cm
GROUTING - Pink

**Custom colors are available on request.





Tea Leaf

The world's most popular beverage possesses a long history during which it has influenced trade, politics and religion. We celebrate this most influential plant with our Tea Leaf mural. Depicting leaves gracefully encircling one other, the mural is enriched by a natural color-shifting essence in the mosaic.



1-Oolong

CXL2085 - 3M-A15-425 Emerald
 3M-A15-430 Fern
 3M-A15-434 Oak Pepper
 3M-A15-401 Peach Blossom
 3225 - 60 x 60 in.
 18RCL72963 - White



2-Green tea

CXL2085 - 3M-A15-411 Opium
 3M-A15-436 Whitehall
 3M-A15-442 Luster Green
 3M-A08-423 Copper
 3225 - 60 x 60 in.
 18RCL72962 - Ivory



3-Chamomile

CXL2085 - 3M-A15-424 Herbal Blonney
 3M-A15-422 Sarsaparilla
 3M-A15-403 Peach Blossom
 3M-A08-413 Peach
 3225 - 60 x 60 in.
 18RCL72961 - Black

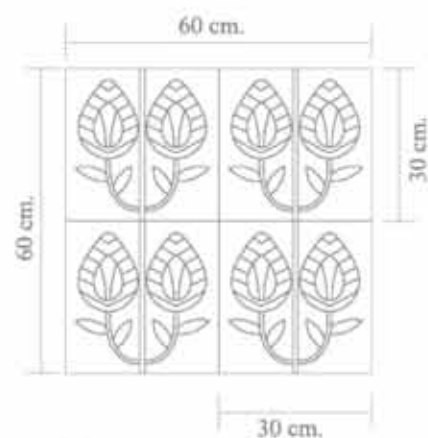


4-Lemongrass

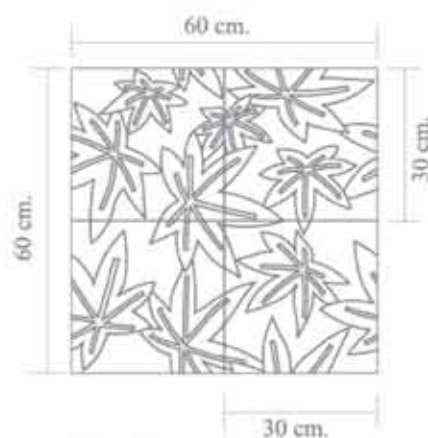
CXL2085 - 3M-L15-227 Pines & Ivy
 3M-A05-814 Horsetail Sliver
 3M-A08-424 Flagger
 3M-A15-430 Fern
 3225 - 60 x 60 in.
 18RCL72960 - Ivory

**Custom colors are available on request.

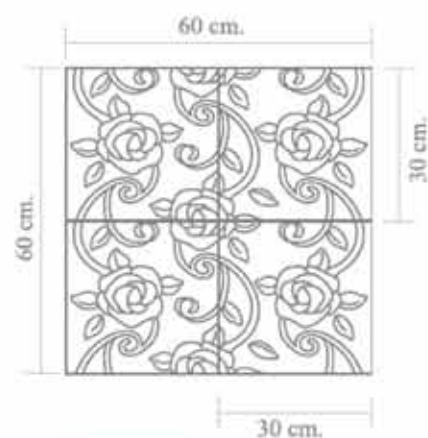
Drawing Sheet



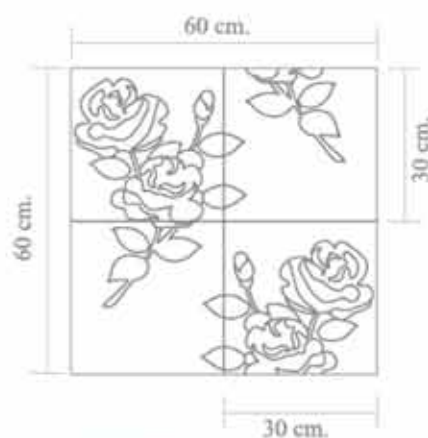
Crocus
60 x 60 cm. per module
module comprises of 4 sheets.



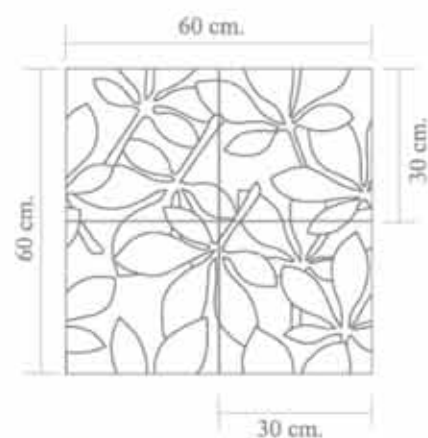
Momiji
60 x 60 cm. per module
module comprises of 4 sheets.



Rose Vine
60 x 60 cm. per module
module comprises of 4 sheets.



Spring Rose
60 x 60 cm. per module
module comprises of 4 sheets.



Tea Leaf
60 x 60 cm. per module
module comprises of 4 sheets.

Summary for all testing results

| Technical Characteristics | Results | Test Method |
|--|-------------------|--------------------|
| Chemical resistance | Class A | ASTM C650 |
| Stain resistance | Class A | ASTM C1378 |
| Bond strength | Average PSI 318** | ASTM C482*Modified |
| Water absorption | Less than 3.0% | ASTM C373 |
| Corrected Static coefficient of friction test-Dry (after cleaing with Hillyard Renovator) | 1.00 | ASTM C1028 |
| Corrected Static coefficient of friction test-Dry (after cleaing with Hillyard Renovator) | 0.70 | ASTM C1028 |
| Robinson Floor Test | Residential*** | ASTM C627 |

* based on 15 x 15 mm. mosaics size

** Using Thin-set : 254 Platinum Laticrete, Thin-Set Mortar (White)
Grouted with : Mapei Keracolor Unsanded Grout with Polymer

*** based on 20 x 20 mm. mosaics size

1. General Information

- Keep the product away direct sunlight, high heat and open flames.
- Use Non-sanded grout.
- White colored adhesives are recommended for use with translucent Sonite materials to prevent color drops.
- For best results, be sure the surfaces to beconvered are completely flat, smooth and that all corners are perpendicular.
- Use caution as to not set curling irons, hot blow dryer, clothing iron or candles or other hot object directly on the surface.

2. Sonite products.

- Differences and variations in shade, flow, grain, tonality, shape, size, veining, moisture absorption, surface finish, color (including discoloration, and/or fading, over time), texture, and coefficient of friction are inherent characteristics and/or occur naturally during the manufacturing process and are not, and shall not be considered, defects in the Sonite products.
- Due to the nature Sonite materials color variation of 5% may occur.

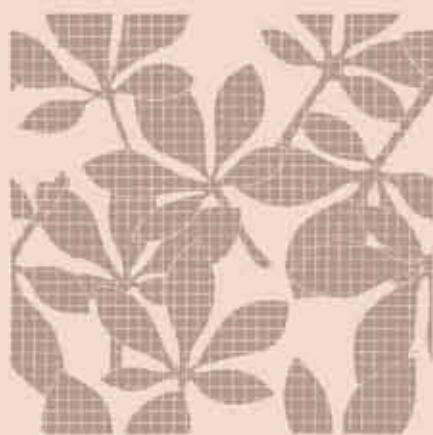
3. Application.

- Please refer to any relevant technical specifications to determine whether a collection is appropriate for an application. Any specifications or guidelines provided by Sonite are merely general guidelines. They are not instructions for any particular use in any particular location.
- Sonite products are primarily intended for use as indoor decorative wall coverings. Sonite mosaics (10, 15, 20 mm) are rated for indoor light traffic flooring use only if installed with epoxy based adhesive and grout. Other tile size (3 mm thickness) are not rated for flooring use. Use of Sonite products other than for intended use voids all warranties and liabilities of Sonite products. Sonite products must be kept away from high heat (Sonite products are not intended to withstand temperatures in excess of 110 C (230 F)) and fires.
- Sonite mosaics are rated for use in stream room with operating temperature < 80 C (176 F) Epoxy based adhesives and grout are required for stream room installation. Sonite mosaics are rated for wet application (showers, baths, and indoor pools). Epoxy based adhesives and grout are required for the installation.
- Sonite recommends Laticrete 254 platinum, Weber fix plus, Weber epoxy, Merkrete that have been tested and approved for normal application with Sonite tiles. For applications with large ambient temperature variation or light traffic floor applications, epoxy based adhesive are recommended.

We believe that the information in this catalog is reliable and offer the information in good faith without guarantee,as conditions and methods of use are beyond our control. We recommend prospective buyers perform their own testing to determine product suitability for all purposes before adopting Sonite on a commercial or residential scale. In no case is Sonite Innovative Surfaces Co.,Ltd. is liable for direct, consequential, economic, or other damages. Sonite Innovative Surfaces Co.,Ltd. disclaims all other warranties, expressed or implied, including the warranty of merchantability and fitness for a particular purpose.

The data that we have provided is to the best of our knowledge accurate and based on testing for official certifying laboratories. However, each pattern, size and material may be perform differently under different applications and it is up to each customer to determine the suitability of the material for each of their intended application.

NOTHING IN THIS CATALOG SHALL BE CONSTRUED IN ANY WAY TO CONFLICT WITH SONITE'S TERMS AND CONDITIONS OF SALE.



www.sonitesurfaces.com

Sonite Innovative Surfaces
3216 S. Broadway Los Angeles,
CA 90007 USA
m : [818] 974-9818
t : [949] 612 7173
f : [949] 612 7173
e : marketing@sonitesurfaces.com

Crystal Design Center Building D110
1420 Soi Latphrao 87 (Chantarasuk)
Praditmanutham Rd., Klongjun Bangkok.
Bangkok 10240 Thailand
t : +66 2102 2105 +66 2102 2107
f : +66 2102 2106
e : internationalmarketing@sonitesurfaces.com

Sonite Office
Sonite Innovative Surfaces Co., Ltd.
253/43 Soi Latphrao 80 (Section 22)
Latphrao Rd., Wangthonglang,
Bangkok 10310 Thailand
t : +66 2935 5575-76
f : +66 2935 5883

www.sonitesurfaces.com