



SONITE

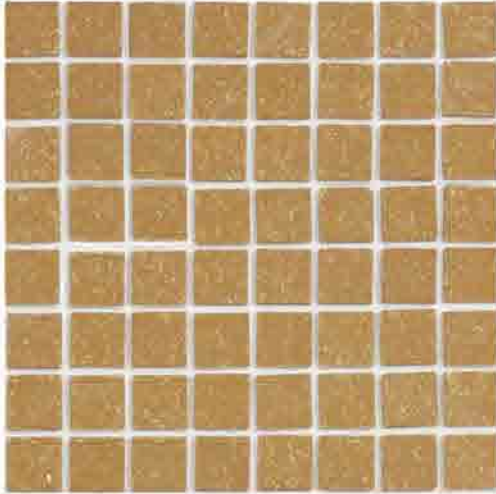
Innovative Surfaces

HUSK

A new addition to
Sonite's bio-composite range

HUSK Collection

Created with discarded outer shells from rice milling, Sonite's new Husk mosaics and solid surfaces incorporate significant quantities of agricultural waste. The collection's advanced bio-composite design yields coverings not only beautiful but also ecologically friendly. Husk is available in four organic tones, each striking an ideal balance between natural warmth and contemporary chic.



Mosaics size : 15 x 15 mm.
Color : SM-HK-813 Khaki



SM-HK-017 Dune



SM-HK-800 Cornsilk

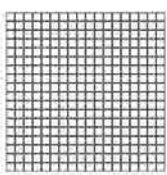


SM-HK-900 Ash

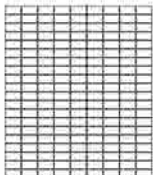


SM-HK-999 Charcoal

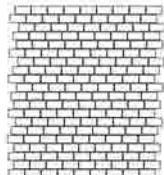
Husk mosaics are available in chip sizes of 15x15mm with the grid pattern
15x30 mm chips with choice of Grid, Bamboo, Herringbone, Madison, Braid and Bond pattern.
Dimond chips with choic of Equinox, Cosmos or Chevron pattern.
Hexagon chips with the Honeycomb pattern.



mosaic size 15x15 mm.
30.5 x 30.5 cm. sheet
12.0 x 12.0 inch sheet



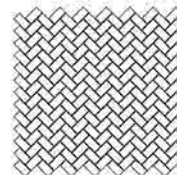
Grid
28.4 x 33.0 cm. sheet
11.2 x 13.0 inch sheet



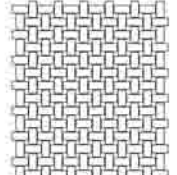
Bamboo
28.4 x 33.0 cm. sheet
11.2 x 13.0 inch sheet



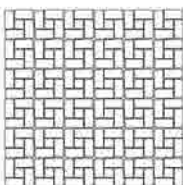
Madison
28.8 x 33.0 cm. sheet
11.3 x 13.0 inch sheet



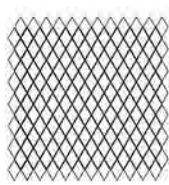
Herringbone
30.5 x 31.2 cm. sheet
12.0 x 12.3 inch sheet



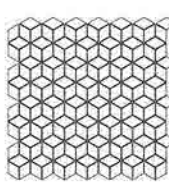
Braid
33.5 x 28.7 cm. sheet
13.2 x 11.3 inch sheet



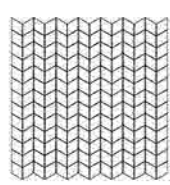
Bond
34.2 x 34.2 cm. sheet
13.5 x 13.5 inch sheet



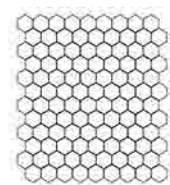
Equinox
31.7 x 29.4 cm. sheet
12.5 x 11.6 inch sheet



Cosmos
29.3 x 29.9 cm. sheet
11.5 x 11.8 inch sheet



Chevron
29.3 x 29.9 cm. sheet
11.5 x 11.8 inch sheet



Honeycomb
32.3 x 29.5 cm. sheet
12.7 x 11.6 inch sheet



Grid (15x30 mm.)
SM-HK-813 Khaki



Bamboo (15x30 mm.)
SM-HK-813 Khaki



Madison (15x30 mm.)
SM-HK-813 Khaki



Herringbone (15x30 mm.)
SM-HK-813 Khaki



Braid (15x30 mm.)
SM-HK-813 Khaki



Bond (15x30 mm.)
SM-HK-813 Khaki



Equinox
SM-HK-999 Charcoal



Chevron
SM-HK-999 Charcoal



Cosmos
SM-HK-999 Charcoal



Honeycomb
SM-HK-999 Charcoal

Tile size : 40 x 180 mm.



TI-H7D-017 Dune



TI-H7D-800 Khaki



TI-H7D-813 Comsilk



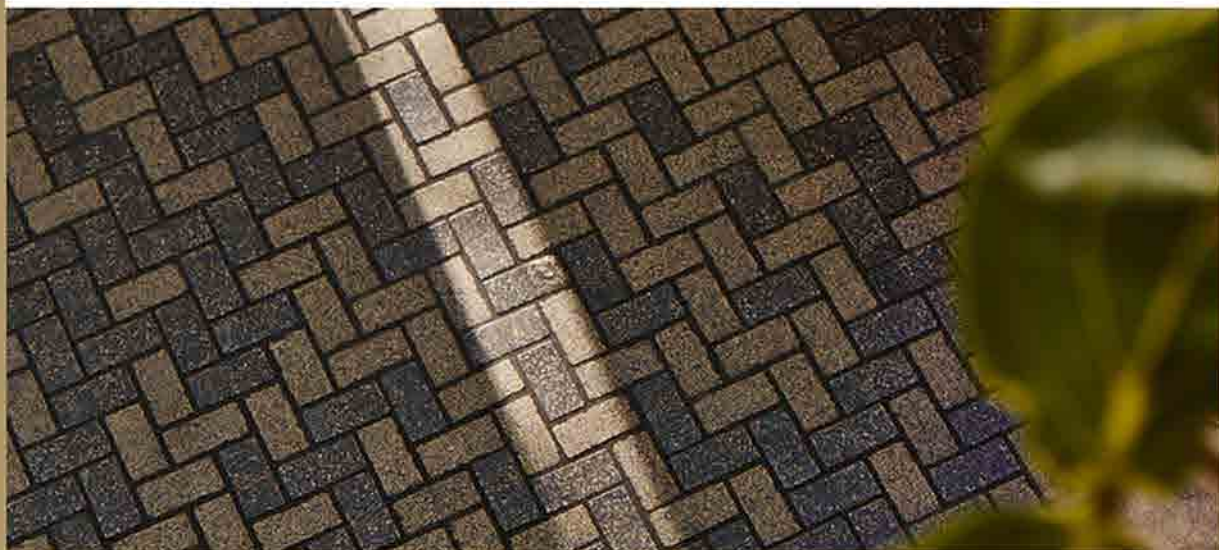
TI-H7D-900 Ash



TI-H7D-999 Charcoal

Husk features:

- * 17 % recycled agricultural content using rice husks discarded as part of the milling process.
- * Available in 15x15 mm and 15x30 mm mosaic tiles as well as a solid surfacing material.
- * Highly stable material with exceptional longevity and durability.
- * Extremely lightweight and easy to handle.
- * Production requires minimal levels of binding material.
- * Available in four organic tones that exude at once rustic warmth and a sophisticated ambience.
- * Eco-friendly material particularly suitable for green households, restaurants, boutiques, coffee shops, spas, cafés, et al.



Sonite Innovative Surfaces
3216 S.Broadway Los Angeles,
CA 90007
m : [818] 974-9818
t : [949] 612 7173
f : [949] 612 7194
e : marketing@sonitesurfaces.com

Crystal Design Center Building D110
1420 Soi Latphrao 87 (Chantrasuk)
Praditmanutham Rd., Klongjun Bangkokpi,
Bangkok 10240 Thailand
t : +66 2102 2105 +66 2102 2107
f : +66 2102 2106
e : internationalmarketing@sonitesurfaces.com

Sonite Office
Sonite Innovative Surfaces Co.,Ltd.
253/43 Soi Latphrao 80 (Section 22)
Latphrao Rd., Wangthonglang,
Bangkok 10310 Thailand
t : +66 2935 5575-76
f : +66 2935 5883

www.sonitesurfaces.com