

CELESTIAL



SONITE

Innovative Surfaces

Shown in:
SM-61S-920 Licorice
SM-60S-023 Capiz



CELESTIAL

Sonite's Celestial mosaics take inspiration from the sky's enthralling beauty and beguiling innitute. From the earliest civilizations, human beings have looked above not only for creative motivation but also for the pure pleasure of an aesthetic experience. At once meeting and eternal, the day and night skies have always enchanted us. With the interlocking geometric patterns of Celestial, just such transxing qualities of the mament can be achieved in your very own space.



Shown in:
SM-60S-935 Smoked Blacklip
SM-60S-023 Capiz

Supernova

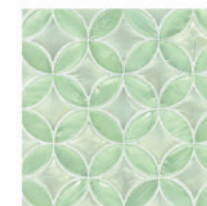
The collection's Supernova mosaic pattern features a bold design motif enhanced by a similarly arresting chiaroscuro effect. Like the sharply contrasting images of light and dark captured through astronomical observation, Supernova brings to interior surroundings an effusion of visual delight and no less a sense of movement across the depths of an outer realm.



Supernova 01
SM-60S-103 Goldlip
SM-60S-811 Natural Mop



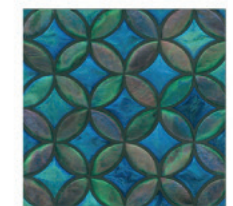
Supernova 02
SM-60S-814 Hawaiian Honey
SM-60S-819 Brownlip



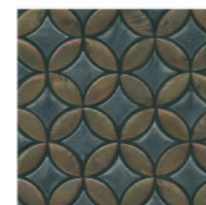
Supernova 03
SM-11S-426 White Jade
SM-11S-071 Phantom Green



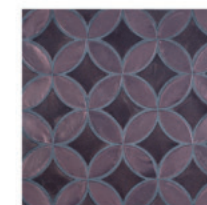
Supernova 04
SM-12S-702 Federal Blue
SM-13S-712 Bijou Blue



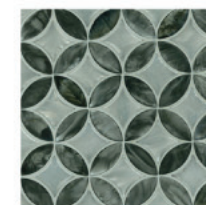
Supernova 05
SM-60S-419 Paua
SM-60S-554 City Night



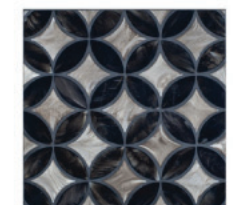
Supernova 06
SM-60S-820 Flagpen
SM-60S-995 Dark Smoke



Supernova 07
SM-13S-312 Pepper Corn
SM-13S-841 Puce



Supernova 08
SM-61S-922 Paloma
SM-11S-901 Silver Mink



Supernova 08
SM-61S-920 Licorice
SM-61S-926 Canteen

**Custom colors are available on request.



Pleiades

Sonite's Pleiades mosaic takes inspiration from the prominent star cluster often referred to as "Seven Sisters". Likewise considered "hot blue" in astronomical terms and thus highly luminous, the star group has figured prominently in the world's lore and literature. No chance arrangement but rather a related group of stars moving across the night sky, the Pleiades impelled our designers to create a sight of similar beauty.



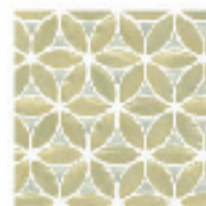
Pleiades 01
SM-608-023 Capiz
SM-608-100 Light Yellowlip



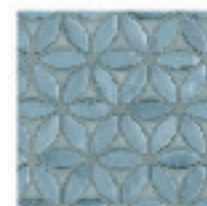
Pleiades 02
SM-608-811 Natural Map
SM-608-103 Goldlip



Pleiades 03
SM-608-819 Brownlip
SM-608-814 Hawaiian Honey



Pleiades 04
SM-115-112 Winter White
SM-115-111 Marshmallow



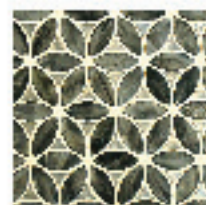
Pleiades 05
SM-608-925 Gray Smoke
SM-608-917 Oyster White



Pleiades 06
SM-125-702 Federal Blue
SM-135-712 Bijou Blue



Pleiades 07
SM-608-816 Hawaiian Honey
SM-608-764 Peacock Plum



Pleiades 08
SM-615-920 Licorice
SM-615-926 Custom



Pleiades 09
SM-608-820 Flagpen
SM-608-995 Dark Smoke

Shown in:
SM-608-023 Capiz
SM-608-100 Light Yellowlip

**Custom colors are available on request.



Equinox

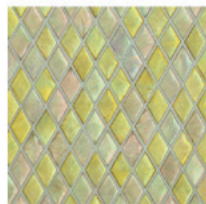
Symmetrical diamond-shaped tiles evoke a quintessential European classicism, while subtle pearlescence lends color variation to the design's neutral hue. The Sun may cross the celestial equator only twice per annum, but Sonite's Equinox pattern befits walls and other surfaces throughout the year.



Equinox 01
SM-60S-023 Capiz
SM-60S-100 Light Yellowlip



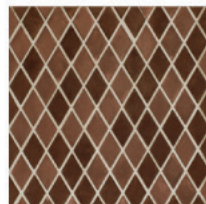
Equinox 02
SM-60S-103 Goldlip
SM-60S-811 Natural Mop



Equinox 03
SM-60S-814 Hawaiian Honey
SM-60S-819 Brownlip



Equinox 04
SM-21S-800 Richgold
SM-21S-829 Honey Gold



Equinox 05
SM-13S-312 Pepper Corn
SM-13S-841 Puce



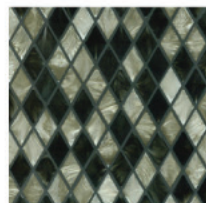
Equinox 06
SM-12S-702 Federal Blue
SM-13S-712 Bijou Blue



Equinox 07
SM-11S-070 White Sand
SM-11S-815 Lead Gray



Equinox 08
SM-61S-828 Java
SM-61S-831 Lark



Equinox 09
SM-61S-920 Licorice
SM-61S-926 Canteen

Ellipse

Ellipse subtly alludes to the orbital planes of planets within our solar system. Repeating oval forms, in a suitably egg-white shade, produce a mosaic of oblique lines and intriguing disc-like shapes. While its name may suggest the related "ellipsis" and an unfinished thought, the design provides aesthetic appeal to completion.



Ellipse 01
SM-60S-103 Goldlip
SM-60S-811 Natural Mop



Ellipse 02
SM-60S-411 Greenlip
SM-60S-917 Oyster White



Ellipse 03
SM-11S-070 White Sand
SM-11S-502 Aquamarine



Ellipse 04
SM-12S-702 Federal Blue
SM-13S-712 Bijou Blue



Ellipse 05
SM-60S-917 Oyster White
SM-60S-925 Gray Smoke



Ellipse 06
SM-61S-440 Leaf Green
SM-61S-926 Canteen



Ellipse 07
SM-60S-820 Flagpen
SM-60S-995 Dark Smoke



Ellipse 08
SM-61S-828 Java
SM-61S-831 Lark

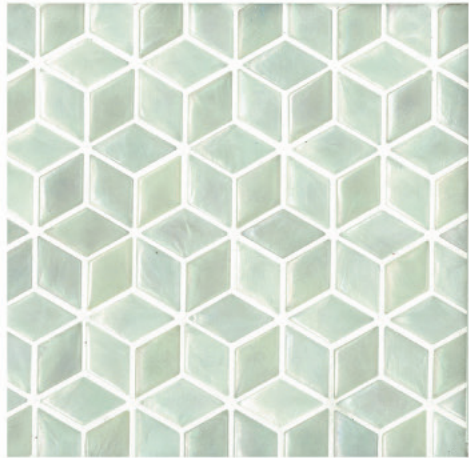


Ellipse 08
SM-61S-920 Licorice
SM-61S-926 Canteen



Cosmos

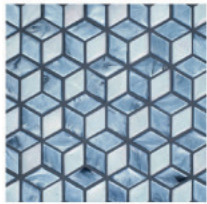
The stepped pattern of Cosmos reflects order and harmony apparent throughout the universe. The mosaic is especially distinctive for its appearing to lift from surfaces in a three-dimensional effect. Cover surfaces with this vividly hued motif and gain a cosmic perspective on design possibilities.



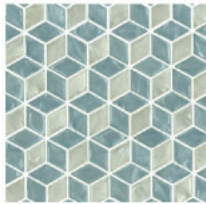
Cosmos 01
SM-60S-023 Capiz
SM-60S-100 Light Yellowlip



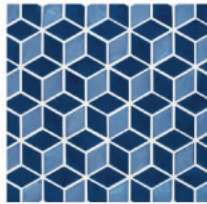
Cosmos 02
SM-60S-814 Hawaiian Honey
SM-60S-103 Goldlip



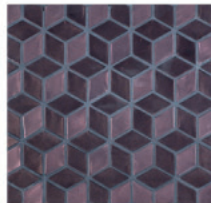
Cosmos 03
SM-60S-917 Oyster White
SM-60S-925 Gray Smoke



Cosmos 04
SM-11S-502 Aquamarine
SM-11S-070 White Sand



Cosmos 05
SM-12S-702 Federal Blue
SM-13S-712 Bijou Blue



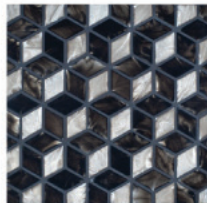
Cosmos 06
SM-13S-312 Pepper Corn
SM-13S-841 Puce



Cosmos 07
SM-60S-820 Flagpen
SM-60S-995 Dark Smoke



Cosmos 08
SM-61S-828 Java
SM-61S-831 Lark



Cosmos 09
SM-61S-920 Licorice
SM-61S-926 Canteen

Show in:
SM-60S-103 Goldlip
SM-60S-814 Hawaiian Honey
SM-60S-819 Brownlip

**Custom colors are available on request.



Shown in:
SM-61S-919 Beluga

Polaris

Like its navigation-star namesake that shines bright in northern skies, our radiant Polaris mosaic points the way to a brilliant interior ambience. With a vivid, deep-hued spectrum and texture suggesting a topographical star chart, our Polaris mosaic ensures you find the desired surface-covering effect.



Polaris 01

SM-60S-023 Capiz
SM-60S-100 Light Yellow



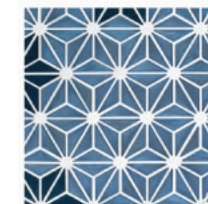
Polaris 02

SM-60S-814 Hawaiian Honey
SM-60S-819 Brownlip



Polaris 03

SM-60S-917 Oyster White
SM-60S-925 Gray Smoke



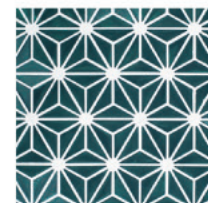
Polaris 04

SM-12S-702 Federal Blue
SM-13S-712 Bijou Blue



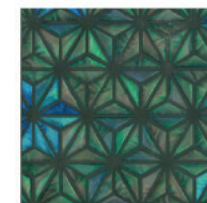
Polaris 05

SM-60S-811 Natural Mop
SM-60S-103 Goldlip



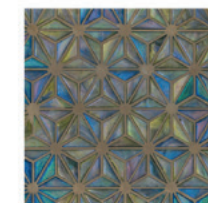
Polaris 06

SM-13S-432 Frosty Spruce
SM-13S-457 Trekking Green



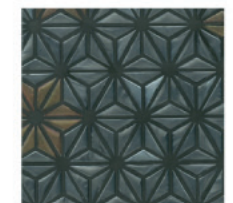
Polaris 07

SM-60S-419 Paua
SM-60S-554 City Night



Polaris 08

SM-60S-816 Botanica Gold
SM-60S-764 Peacock Plum



Polaris 09

SM-60S-820 Flagpen
SM-60S-995 Dark Smoke

**Custom colors are available on request.



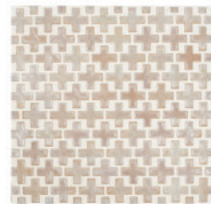
Shown in:
SM-13S-312 Pepper Corn
SM-13S-841 Puce

Pulsar

An interlocking design inspired by the energy bursts of rapidly rotating neutron stars, Sonite's Pulsar mosaic affords a similarly energetic aspect to environments. Like the waves emitted by its namesake, the pattern sweeps across a room and draws the eye to mysterious optical pulses.



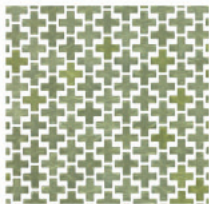
Pulsar 01
SM-60S-023 Capiz
SM-60S-100 Light Yellow



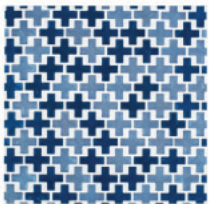
Pulsar 02
SM-60S-103 Goldlip
SM-60S-811 Natural Mop



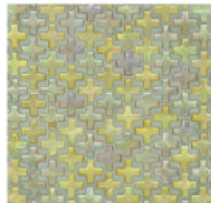
Pulsar 03
SM-60S-411 Greenlip
SM-60S-917 Oyster White



Pulsar 04
SM-21S-829 Honey Gold
SM-21S-800 Rich Gold



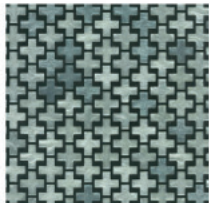
Pulsar 05
SM-12S-702 Federal Blue
SM-13S-712 Bijou Blue



Pulsar 06
SM-60S-814 Hawaiian Honey
SM-60S-819 Brownlip



Pulsar 07
SM-60S-419 Paua
SM-60S-554 City Night



Pulsar 08
SM-21S-946 Silver
SM-21S-949 Smoked Pearl

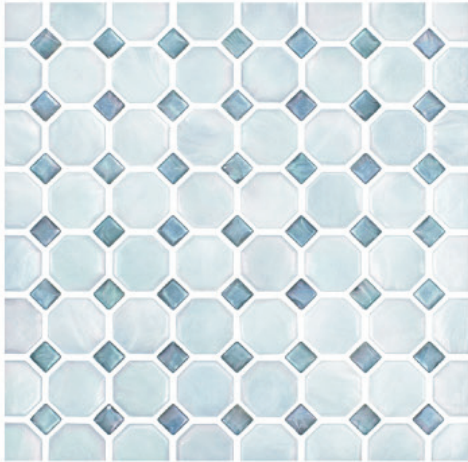


Pulsar 09
SM-61S-920 Licorice
SM-61S-926 Canteen

**Custom colors are available on request.

Constellation

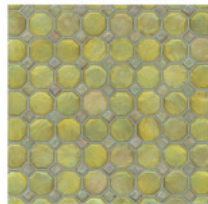
Scan the diamantine grid of Constellation and discern a stellar pattern. While the figures ascribed to star groups sky may be mythological, we like to think this mosaic's outstanding visual effect on interior spaces is an undeniable reality.



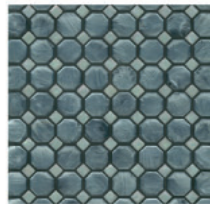
Constellation 01
SM-60S-411 Greenlip
SM-60S-917 Oyster White



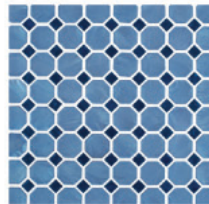
Constellation 02
SM-60S-103 Goldlip
SM-60S-811 Natural Mop



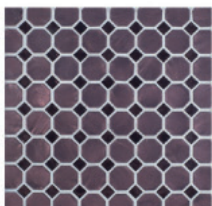
Constellation 03
SM-60S-814 Hawaiian Honey
SM-60S-819 Brownlip



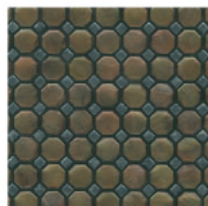
Constellation 04
SM-60S-917 Oyster White
SM-60S-925 Gray Smoke



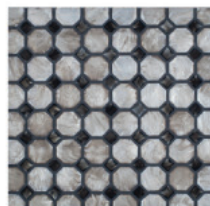
Constellation 05
SM-12S-702 Federal Blue
SM-13S-712 Bijou Blue



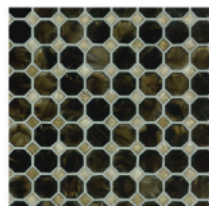
Constellation 06
SM-13S-312 Pepper Corn
SM-13S-841 Puce



Constellation 07
SM-60S-820 Flagpen
SM-60S-995 Dark Smoke



Constellation 08
SM-61S-920 Licorice
SM-61S-926 Canteen



Constellation 09
SM-61S-828 Java
SM-61S-831 Lark

Big Cloud

To gaze upon clouds is thought an unproductive pastime. We disagree. Sonite's Cloud mosaic produces lasting visual appeal with a pattern of symmetrically arrayed cuneiform wedges seen to arc across surfaces. In the clouds indeed.



Big Cloud 01
SM-60S-023 Capiz
SM-60S-100 Light Yellowlip



Big Cloud 02
SM-60S-103 Goldlip
SM-60S-811 Natural Mop



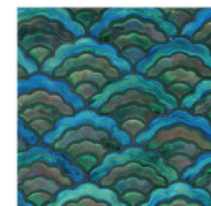
Big Cloud 03
SM-60S-411 Greenlip
SM-60S-917 Oyster White



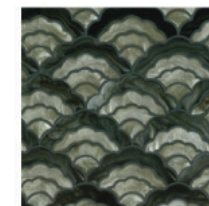
Big Cloud 04
SM-11S-071 Phantom Green
SM-11S-426 White Jade



Big Cloud 05
SM-60S-917 Oyster White
SM-60S-925 Gray Smoke



Big Cloud 06
SM-60S-554 City Night
SM-60S-419 Paua



Big Cloud 07
SM-61S-920 Licorice
SM-91S-926 Canteen



Big Cloud 08
SM-60S-820 Flagpen
SM-60S-995 Dark Smoke

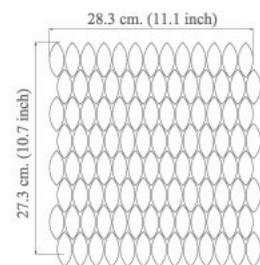


Big Cloud 09
SM-61S-828 Java
SM-61S-830 Otter

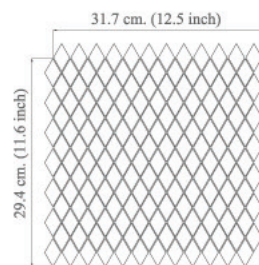


Shown in:
SM-425-723 Stella
SM-425-512 Bluesteel
SM-425-906 Phantom
SM-425-714 Majolica Blue

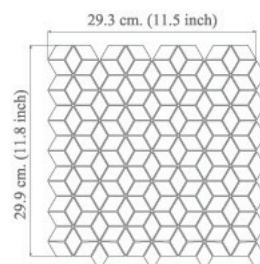
Drawing Sheet



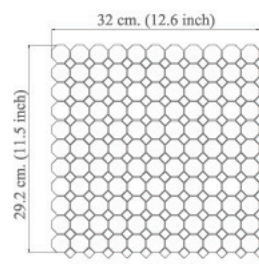
Ellipse
28.3 x 27.3 cm. sheet
11.1 x 10.7 inch sheet



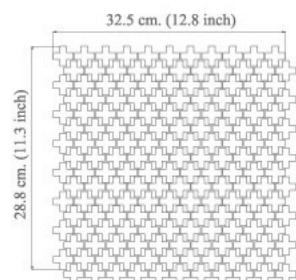
Equinox
31.7 x 29.4 cm. sheet
12.5 x 11.6 inch sheet



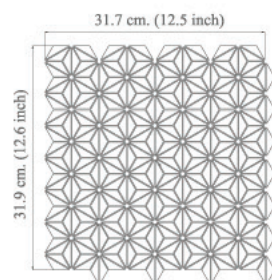
Cosmos
29.3 x 29.9 cm. sheet
11.5 x 11.8 inch sheet



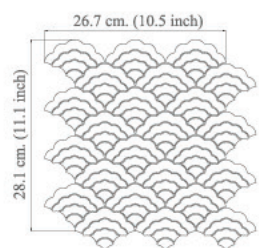
Constellation
32 x 29.2 cm. sheet
12.6 x 11.5 inch sheet



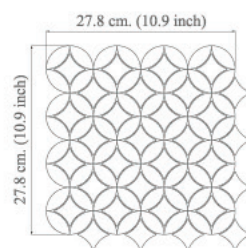
Pulsar
32.5 x 28.8 cm. sheet
12.8 x 11.3 inch sheet



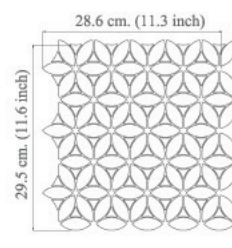
Polaris
31.7 x 31.9 cm. sheet
12.5 x 12.6 inch sheet



Big Cloud
26.7 x 28.1 cm. sheet
10.5 x 11.1 inch sheet



Supernova
27.8 x 27.8 cm. sheet
10.9 x 10.9 inch sheet



Pleiades
28.6 x 29.5 cm. sheet
11.3 x 11.6 inch sheet

Summary for all testing results

Technical Characteristics	Results	Test Method
Chemical resistance	Class A	ASTM C650
Stain resistance	Class A	ASTM C1378
Bond strength	Average PSI 318**	ASTM C482*Modified
Water absorption	Less than 3.0%	ASTM C373
Corrected Static coefficient of friction test-Dry (after cleaing with Hillyard Renovator)	1.00	ASTM C1028
Corrected Static coefficient of friction test-Dry (after cleaing with Hillyard Renovator)	0.70	ASTM C1028
Robinson Floor Test	Residential***	ASTM C627

* based on 15 x 15 mm. mosaics size

** Using Thin-set : 254 Platinum Laticrete, Thin-Set Mortar (White)
Grouted with : Mapei Keracolor Unsanded Grout with Polymer

*** based on 20 x 20 mm. mosaics size

1. General Information

- Keep the product away direct sunlight, high heat and open flames.
- Use Non-sanded grout.
- White colored adhesives are recommended for use with translucent Sonite materials to prevent color drops.
- For best results, be sure the surfaces to be covered are completely flat, smooth and that all corners are perpendicular.
- Use caution as to not set curling irons, hot blow dryer, clothing iron or candles or other hot object directly on the surface.

2. Sonite products.

- Differences and variations in shade, flow, grain, tonality, shape, size, veining, moisture absorption, surface finish, color (including discoloration, and/or fading, over time), texture, and coefficient of friction are inherent characteristics and/or occur naturally during the manufacturing process and are not, and shall not be considered, defects in the Sonite products.
- Due to the nature Sonite materials color variation of 5% may occur.

3. Application.

- Please refer to any relevant technical specifications to determine whether a collection is appropriate for an application. Any specifications or guidelines provided by Sonite are merely general guidelines. They are not instructions for any particular use in any particular location.
- Sonite products are primarily intended for use as indoor decorative wall coverings. Sonite mosaics (10, 15, 20 mm) are rated for indoor light traffic flooring use only if installed with epoxy based adhesive and grout. Use of Sonite products other than for intended use voids all warranties and liabilities of Sonite products. Sonite products must be kept away from high heat (Sonite products are not intended to withstand temperatures in excess of 110° C (230° F)) and fires.
- Sonite mosaics are rated for use in steam room with operating temperature < 80° C (176° F) Epoxy based adhesives and grout are required for steam room installation. Sonite mosaics are rated for wet application (showers, baths, and indoor pools). Epoxy based adhesives and grout are required for the installation.
- Sonite recommends Laticrete 254 platinum, Weber fix plus, Weber epoxy, Merckrete that have been tested and approved for normal application with Sonite tiles. For applications with large ambient temperature variation or light traffic floor applications, epoxy based adhesive are recommended.

We believe that the information in this catalog is reliable and offer the information in good faith without guarantee, as conditions and methods of use are beyond our control. We recommend prospective buyers perform their own testing to determine product suitability for all purposes before adopting Sonite on a commercial or residential scale. In no case is Sonite Innovative Surfaces Co., Ltd. liable for direct, consequential, economic, or other damages. Sonite Innovative Surfaces Co., Ltd. disclaims all other warranties, expressed or implied, including the warranty of merchantability and fitness for a particular purpose.

The data that we have provided is to the best of our knowledge accurate and based on testing for official certifying laboratories. However, each pattern, size and material may be performed differently under different applications and it is up to each customer to determine the suitability of the material for each of their intended application.

NOTHING IN THIS CATALOG SHALL BE CONSTRUED IN ANY WAY TO CONFLICT WITH SONITE'S TERMS AND CONDITIONS OF SALE.



Sonite Innovative Surfaces
3216 S.Broadway Los Angeles,
CA 90007 USA
m : [818] 974-9818
t : [949] 612 7173
f : [949] 612 7173
e : marketing@sonitesurfaces.com

Crystal Design Center Building D110
1420 Soi Latphrao 87 (Chantrasuk)
Praditmanutham Rd., Klongjun Bangkapi,
Bangkok 10240 Thailand
t : +66 2102 2105 +66 2102 2107
f : +66 2102 2106
e : internationalmarketing@sonitesurfaces.com

Sonite Office
Sonite Innovative Surfaces Co.,Ltd.
253/43 Soi Latphrao 80 (Section 22)
Latphrao Rd., Wangthonglang,
Bangkok 10310 Thailand
t : +66 2935 5575-76
f : +66 2935 5883

www.sonitesurfaces.com